

artos[®]

F901-7

OPERATING SPECIFICATIONS

brass hand shower squ



FEATURES

Solid Brass

OPERATING PRESSURE

Minimum: 15 psi

Maximum: 75 psi

Above 90psi it may be necessary to install a pressure reducer

OPERATING TEMPERATURE

Maximum: 176°

FLOW RATE

1.8 USGPM

APPROVALS

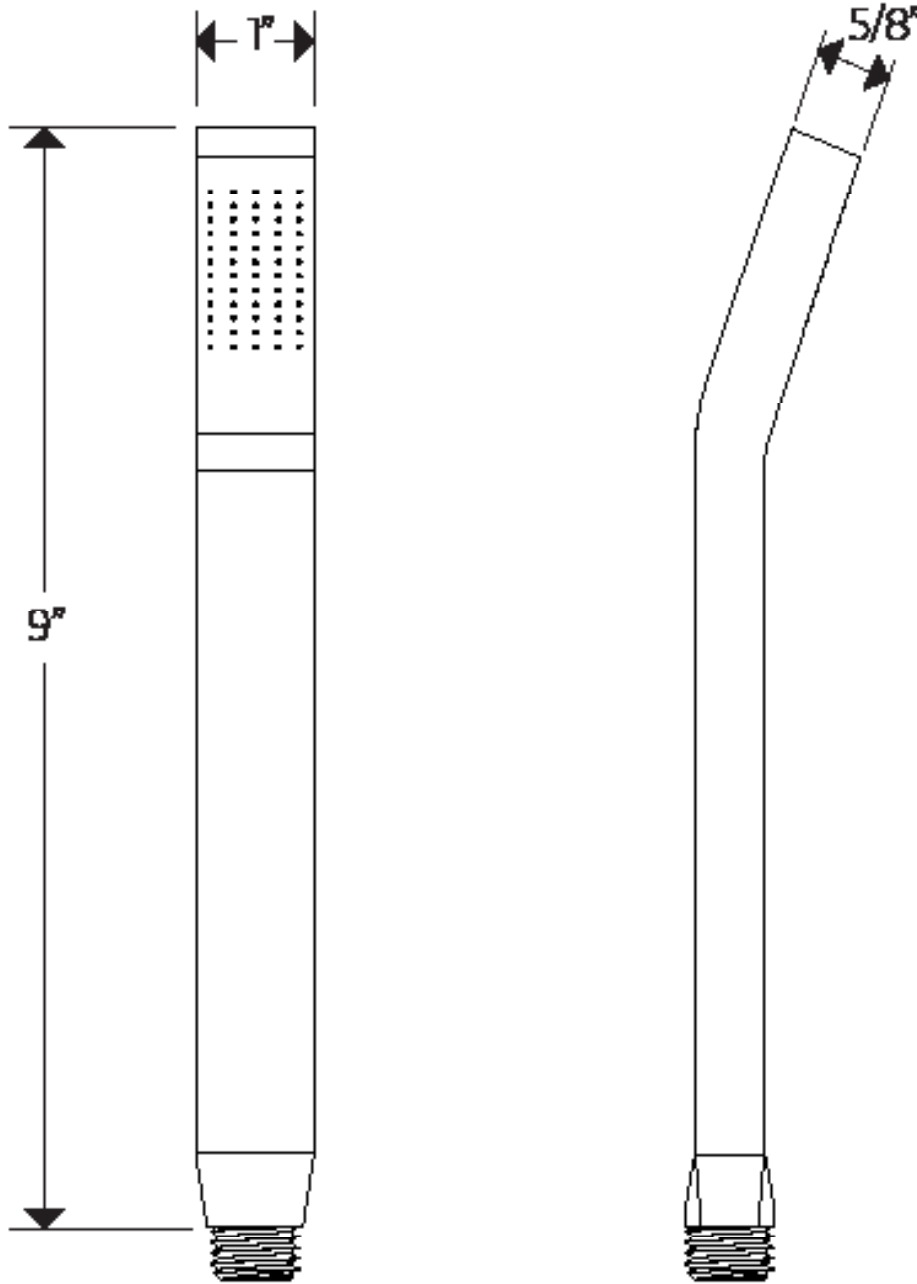


artos[®]

F901-7

PRODUCT DIMENSIONS

brass hand shower squ



Back flow preventer
in connection

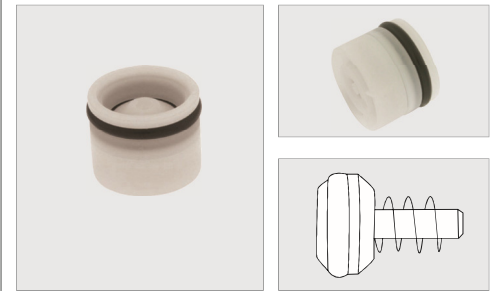
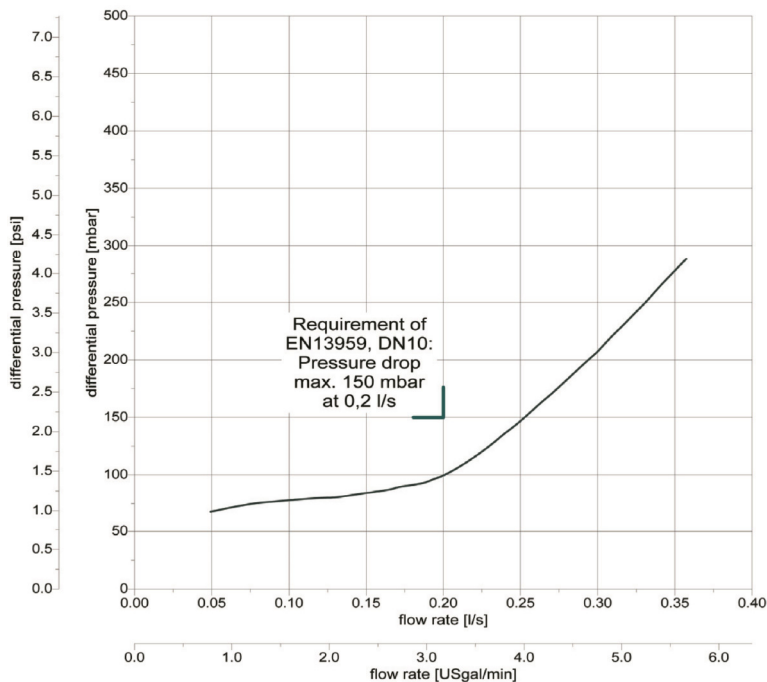
Features and Benefits

- ▶ 100% factory tested drip tight operation.
- ▶ Easy to insert into the application device.
- ▶ Spring loaded plunger: operates in any position.
- ▶ Low headloss, low cracking pressure.

Certification

ANSI / NSF 61
ASME A112.18.3M

Headloss Curve



Option Available

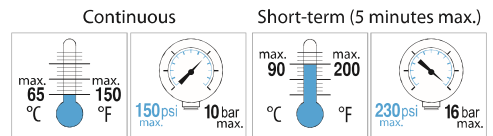
Part #	Housing	Closing system
31.3001.0	White	White

Materials

Name	Material
Housing	Acetal
Guide	Acetal
Plunger	Acetal
Spring	Stainless steel AISI 301
O-ring seals	NBR

Technical Data

Medium: Clear water only
 Approximate Cracking Pressure: 0.49 psi
 Wetted surface area: 2918 mm²



Dimensions

