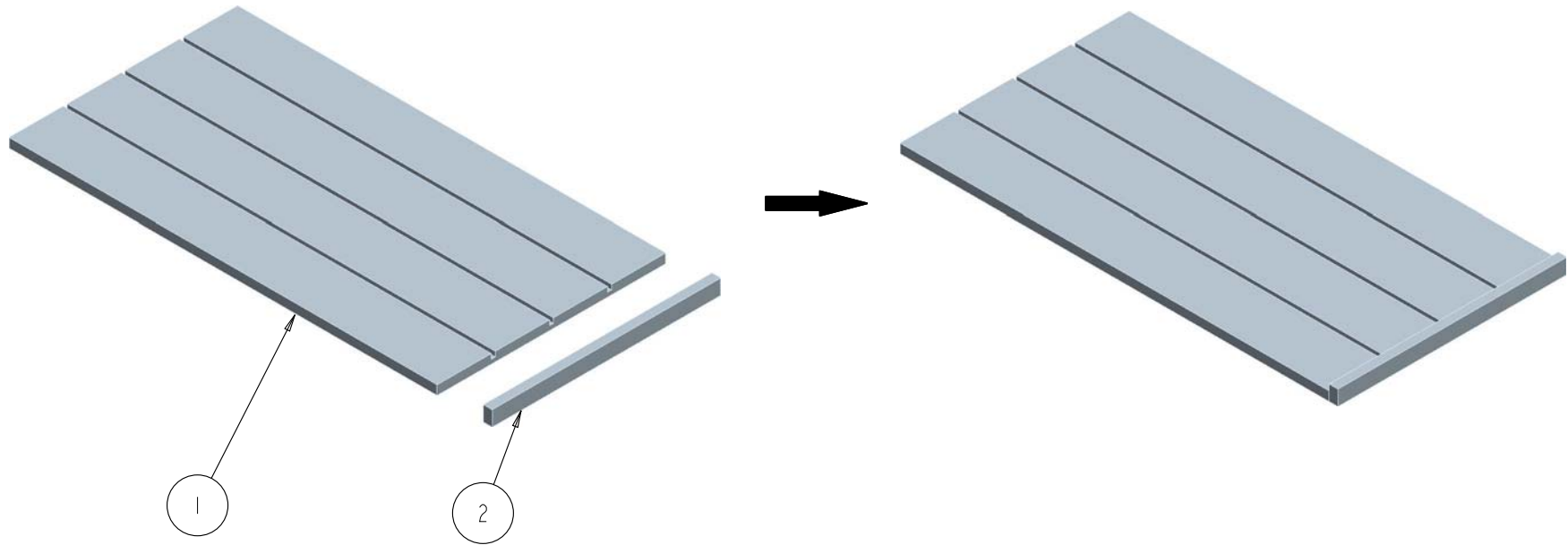
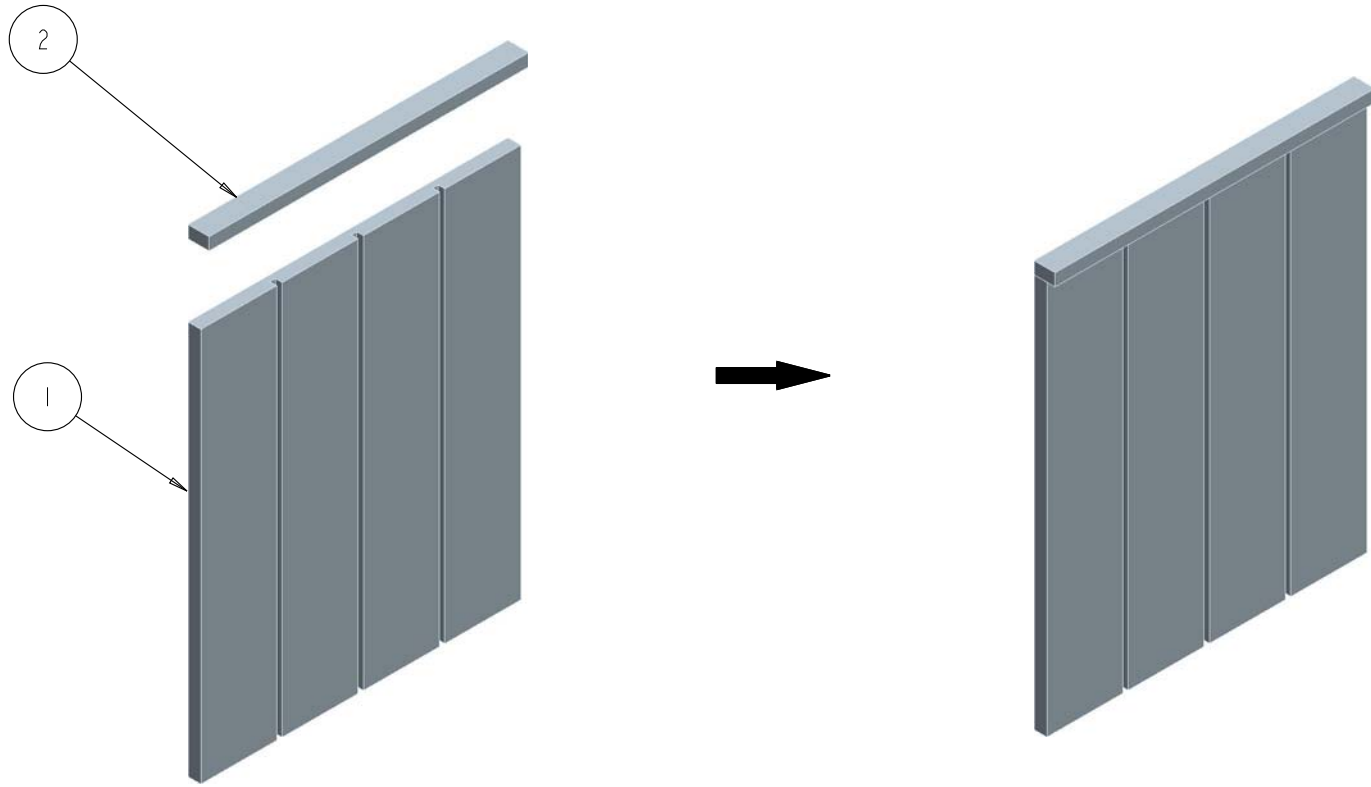


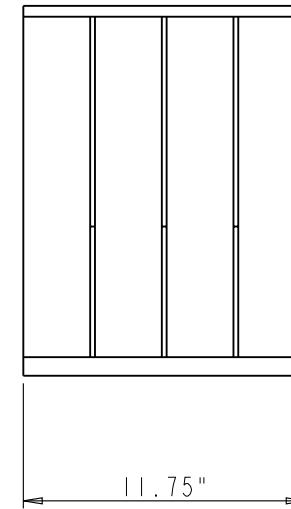
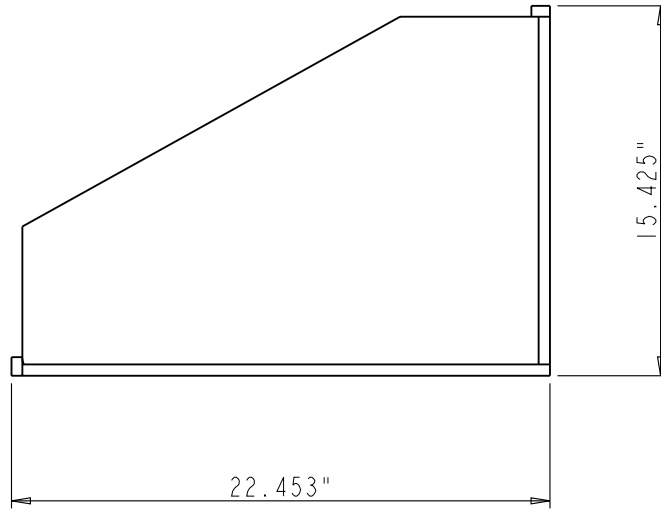
3	TD-BACK-PANEL-ASSY		1			ASSEMBLY	1
2	TD-DEVIDER		3			PART	1
1	TD-BOTTOM-PANEL-ASSY		1			ASSEMBLY	1
NO.	ITEM#	MATERIAL	QTY	UNIT		TYPE	ASSY LEVEL
				WEIGHT			
<b>HARDWARE</b> <b>HR</b> 4319 MARLENA ST. BOSSIER CITY, LA71111 <b>RESOURCES</b>		ITEM#: TRAY-DEVIDER FINISH:			MATERIAL: WEIGHT: 9 PROJECTION:		
PROPRIETARY AND CONFIDENTIAL THE INFORMATION CONTAINED IN THIS DRAWING IS THE SOLE PROPERTY OF HARDWARE RESOURCES INC. ANY REPRODUCTION IN PART OR AS A WHOLE WITHOUT THE WRITTEN PERMISSION OF HARDWARE RESOURCES INC. IS PROHIBITED.		TOLERANCE UNLESS OTHERWISE SPECIFIED: X : MM ±0.20 X.X : MM ±0.10 X.XX : MM ±0.05 ANGULAR: ±0.5° DO NOT SCALE DRAWING		UNIT: SIZE:	DRAWN BY: <i>alan.liu</i> CHECKED BY:	DATE:	DATE:
				APPROVED BY:		DATE:	



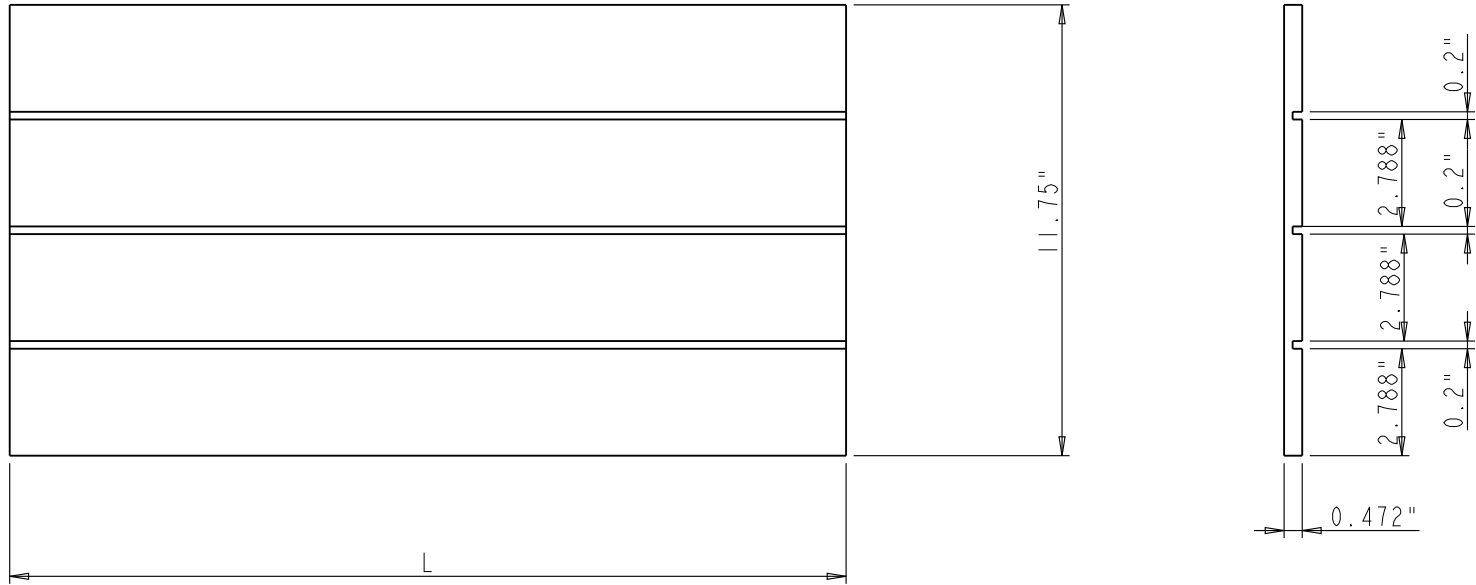
2	TD-KEEPER-MOLDING		I			PART	I
1	TD-BOTTOM-PANEL		I			PART	I
NO.	ITEM#	MATERIAL	QTY	UNIT	TOTLE	TYPE	ASSY LEVEL
				WEIGHT			
<b>HARDWARE</b> <b>HR</b> 4319 MARLENA ST. BOSSIER CITY, LA71111 <b>RESOURCES</b>		<b>ITEM#</b> TD-BOTTOM-PANEL-ASSY			<b>MATERIAL:</b> _____ <b>WEIGHT:</b> _____		
<b>PROPRIETARY AND CONFIDENTIAL</b> THE INFORMATION CONTAINED IN THIS DRAWING IS THE SOLE PROPERTY OF HARDWARE RESOURCES INC. ANY REPRODUCTION IN PART OR AS A WHOLE WITHOUT THE WRITTEN PERMISSION OF HARDWARE RESOURCES INC. IS PROHIBITED.		<b>FINISH:</b> _____			<b>PROJECTION:</b> 		
<b>TOLERANCE UNLESS OTHERWISE SPECIFIED:</b> X : MM ±0.20 X.X : MM ±0.10 X.XX : MM ±0.05 ANGULAR: ±0.5° DO NOT SCALE DRAWING		<b>UNIT:</b> _____	<b>DRAWN BY:</b> <i>alan.liu</i>		<b>DATE:</b> _____		
		<b>SIZE:</b> _____	<b>CHECKED BY:</b> _____		<b>DATE:</b> _____		
		<b>APPROVED BY:</b> _____		<b>DATE:</b> _____			



2	TD-KEEPER-MOLDING		I			PART	I
1	TD-BACK-PANEL		I			PART	I
NO.	ITEM#	MATERIAL	QTY	UNIT	TOTLE	TYPE	ASSY LEVEL
				WEIGHT			
<b>HARDWARE</b> <b>HR</b> 4319 MARLENA ST. BOSSIER CITY, LA71111 <b>RESOURCES</b>		<b>ITEM#</b> TD-BACK-PANEL-ASSY		<b>MATERIAL:</b> WEIGHT:		<b>PROJECTION:</b>	
<b>PROPRIETARY AND CONFIDENTIAL</b> THE INFORMATION CONTAINED IN THIS DRAWING IS THE SOLE PROPERTY OF HARDWARE RESOURCES INC. ANY REPRODUCTION IN PART OR AS A WHOLE WITHOUT THE WRITTEN PERMISSION OF HARDWARE RESOURCES INC. IS PROHIBITED.		<b>FINISH:</b>		TOLERANCE UNLESS OTHERWISE SPECIFIED: X : MM ±0.20 X.X : MM ±0.10 X.XX : MM ±0.05 ANGULAR: ±0.5° DO NOT SCALE DRAWING	UNIT: SIZE:	DRAWN BY: <i>alan.liu</i> CHECKED BY:	DATE: DATE: DATE:
				PAGE 00	APPROVED BY:	DATE:	



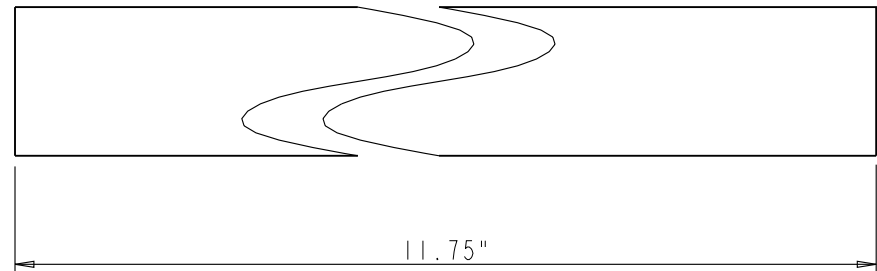
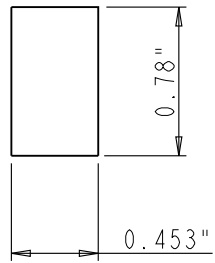
HARDWARE <b>HR</b> 4319 MARLENA ST. BOSSIER CITY, LA71111 RESOURCES <b>PROPRIETARY AND CONFIDENTIAL</b> THE INFORMATION CONTAINED IN THIS DRAWING IS THE SOLE PROPERTY OF HARDWARE RESOURCES INC. ANY REPRODUCTION IN PART OR AS A WHOLE WITHOUT THE WRITTEN PERMISSION OF HARDWARE RESOURCES INC. IS PROHIBITED	ITEM: TRAY-DEVIDER	MATERIAL:
	FINISH:	WEIGHT: 9
TOLERANCE UNLESS OTHERWISE SPECIFIED: X : MM ±0.20 X.X : MM ±0.10 X.XX : MM ±0.05 ANGULAR: ±0.5° DO NOT SCALE DRAWING	UNIT: SIZE:	PROJECTION:
	DRAWN BY: <i>alan.liu</i>	DATE:
	CHECKED BY:	DATE:
	APPROVED BY:	DATE:



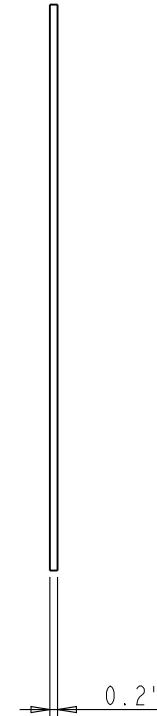
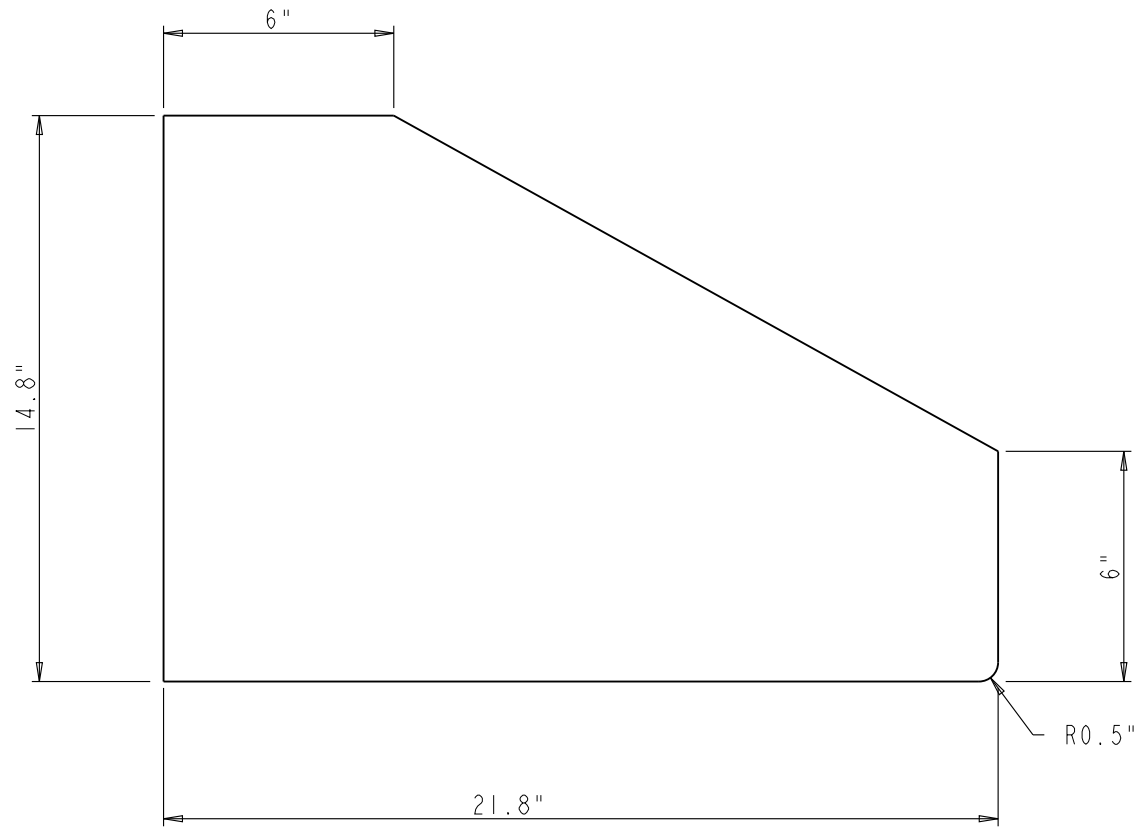
Note:

1. Material: Ply wood with C/D Birth veneer  
Two side UV coating;
2. The dimension " L " of bottom panel is 22";
3. The dimension " L " of back panel is 14.5";

<b>HARDWARE</b> <b>HR</b> 4319 MARLENA ST. BOSSIER CITY, LA71111 <b>RESOURCES</b>	ITEM:	TD-PANEL		MATERIAL:
	FINISH:			WEIGHT: 9
<b>PROPRIETARY AND CONFIDENTIAL</b> THE INFORMATION CONTAINED IN THIS DRAWING IS THE SOLE PROPERTY OF HARDWARE RESOURCES INC. ANY REPRODUCTION IN PART OR AS A WHOLE WITHOUT THE WRITTEN PERMISSION OF HARDWARE RESOURCES INC. IS PROHIBITED	TOLERANCE UNLESS OTHERWISE SPECIFIED: X : MM ±0.20 X.X : MM ±0.10 X.XX : MM ±0.05 ANGULAR: ±0.5° DO NOT SCALE DRAWING	UNIT:	DRAWN BY: <i>alan.liu</i>	DATE:
		SIZE:	CHECKED BY:	DATE:
			APPROVED BY:	DATE:



<b>HARDWARE</b> <b>HR</b> 4319 MARLENA ST. BOSSIER CITY, LA 71111 <b>RESOURCES</b>	<b>ITEM#:</b> TD-KEEPER-MOLDING		<b>MATERIAL:</b> Hard Maple		
	<b>FINISH:</b>		<b>WEIGHT:</b> 9		
<b>PROPRIETARY AND CONFIDENTIAL</b> THE INFORMATION CONTAINED IN THIS DRAWING IS THE SOLE PROPERTY OF HARDWARE RESOURCES INC. ANY REPRODUCTION IN PART OR AS A WHOLE WITHOUT THE WRITTEN PERMISSION OF HARDWARE RESOURCES INC. IS PROHIBITED	<b>TOLERANCE UNLESS          OTHERWISE SPECIFIED:</b> X : MM ±0.20 X X : MM ±0.10 X X X : MM ±0.05 ANGULAR : ±0.5° DO NOT SCALE DRAWING		<b>UNIT:</b>	<b>DRAWN BY:</b> <i>alan.liu</i>	<b>DATE:</b>
	<b>SIZE:</b>	<b>CHECKED BY:</b>	<b>DATE:</b>	<b>PROJECTION:</b>	
	<b>APPROVED BY:</b>	<b>DATE:</b>			



Note:

1. Material: MDF with Maple veneer, two side UV coating;

<b>HARDWARE</b> <b>HR</b> 4319 MARLENA ST. BOSSIER CITY, LA71111 RESOURCES		ITEM: TD-DEVIDER		MATERIAL:	
PROPRIETARY AND CONFIDENTIAL THE INFORMATION CONTAINED IN THIS DRAWING IS THE SOLE PROPERTY OF HARDWARE RESOURCES INC. ANY REPRODUCTION IN PART OR AS A WHOLE WITHOUT THE WRITTEN PERMISSION OF HARDWARE RESOURCES INC. IS PROHIBITED.		FINISH:		WEIGHT: 9 PROJECTION:	
TOLERANCE UNLESS OTHERWISE SPECIFIED: X: MM ±0.20 X.X: MM ±0.10 X.XX: MM ±0.05 ANGULAR: ±0.5° DO NOT SCALE DRAWING		UNIT:	DRAWN BY: <i>alan.liu</i>	DATE:	
		SIZE:	CHECKED BY:	DATE:	
		APPROVED BY:		DATE:	