

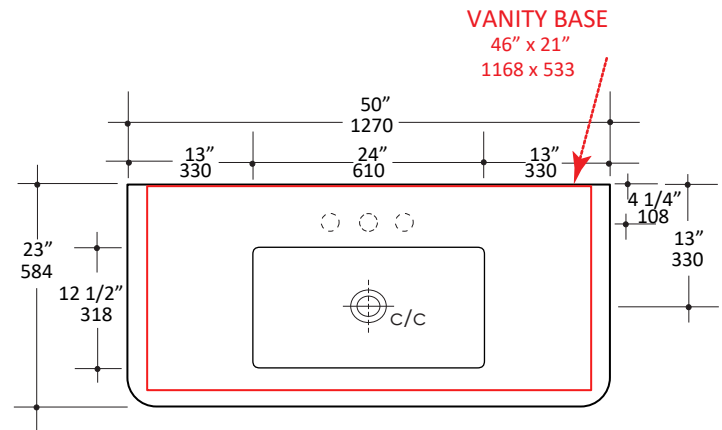
Specifications:

Installation:	Vanity-top
Exterior Dimensions:	50" w x 23" d x 6 1/8" h
Material:	Concrete
Weight:	186 lbs
Overflow:	No
Finishes:	TER - Terracotta SLT- Slate CHL - Charcoal SND - Sand
Faucet Holes:	00 - no hole 01 - one centered hole 02 - two hole - center and right, 4" spread 03 - three hole, 8" spread
Vanity Base Size:	46" x 21" (template available upon request)
Faucet Hole Size:	Ø 1 3/8"
Drain Hole Size:	Ø 1 3/4"



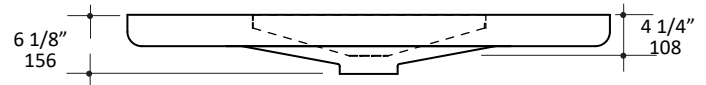
Features:

- Concrete sink without overflow
- Most standard American drains can also be used
- Current cut-out template can be requested
- Size can be customizable upon request (conditions apply)



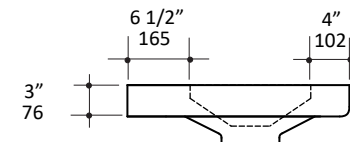
Codes + Standards:

- Meets and exceeds applicable national codes and standards



Recommended Items:

- European drain without overflow
 - 7100-13



LACAVA reserves the right to revise any dimension or information on this sheet without notice. Dimensions are nominal and may vary within an industry accepted tolerance of 1/4".
Drawings provided herein are meant to give the user an idea of the product and are not made to scale.
Revised: 10/26/2020