

# NM2-2RDCS

## 2" M2 Round LED Recessed Lensed Downlight

Source: 6W, 8W or 10W LED  
400lm, 600lm or 850lm

Type
Project
Catalog No.
Notes

### PRODUCT DESCRIPTION

M2 downlight series features quality and convenience with easy installation for insulated or non-insulated applications.

### FEATURES

- No housing required - IC Air-Tight rated
- Easy installation for remodel or new construction applications
- Quick disconnect allows for extended lengths
- 400lm, 600lm or 850lm LED packages
- 2700K or 3000K @ 90+ CRI
- Triac or ELV dimming
- 5-year limited warranty
- cETLus Listed for Wet Locations

### SPECIFICATION

**Construction:** Die-cast aluminum trims available in matte black or matte powder white finish. Lensed downlight includes a reflector with the same finish as trim; optional field changeable reflector inserts or baffle inserts are available.

**Air Flow Restriction:** Luminaire has factory installed gasket to restrict airflow from room into ceiling plenum to <2CFM (cubic feet per minute) in accordance with ASTM-283 Air-Tight requirements.

**Clearance:** IC rated luminaires are rated for direct contact with insulation (not spray foam insulation), no minimum clearance is required.

**Junction Box:** Prewired junction box includes quick connect to LED fixtures for ease of installation. Junction box includes two (400lm/600lm) or four (850lm) 1/2" trade size knockouts and snap on cover with 7" quick connect wire. Luminaire includes 5" (400lm/600lm) or 4" (850lm) quick connect wire.

**Mounting:** No housing is required, two tensions steel spring clips secure luminaire to ceiling. Accommodates ceiling thickness up to 3/4". New construction frame-in kit is available, see accessories.

### ELECTRICAL

**Input Voltage:** 120V

**Delivered Lumens / Wattage:** 40 = 450lm / 6W; 60 = 500lm / 8W; 85 = 725lm / 10W

**Color Temperature:** 2700K or 3000K

**CRI:** 90+CRI

**Beam Spread:** 44° Flood

**Operating Temperature:** 40 & 60 = 0°C to 40°C ambient temperature; 85 = 0°C to 25°C ambient temperature

**Lifetime:** 60,000 hours @ L70

**Dimming:** Dimmable down to 10% with Triac or ELV

[Click Here](#) or check complete dimmer list at [www.NoraLighting.com](http://www.NoraLighting.com) in the "Compatibility" page under "Resources" tab

### OPTIONAL MOUNTING ACCESSORIES

**NM2-2R-F:** New Construction Frame-In Plate

**NM2-EW-4:** 4' Quick Connect Linkable Extension Cable

**NM2-EW-10:** 10' Quick Connect Linkable Extension Cable

### LABELS AND LISTINGS

- cETLus Listed for Wet Locations
- [5-Year Limited Warranty](#)
- FCC compliant
- Certified to the high efficacy requirements of California Title 24 JA8-2019

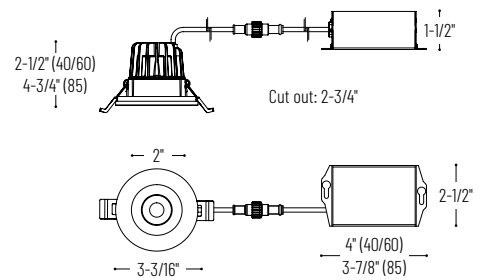


### PRODUCT IMAGES AND DIMENSIONS



**NM2-2RDCSXXXBB**  
400lm or 600lm  
Matte Black

**NM2-2RDCS85XXMPW**  
850lm  
Matte Powder White



## 2" M2 Round LED Recessed Lensed Downlight

Trim Type	Lumens / Wattage	Color Temperature / CRI	Finish
<b>NM2-2RDCS</b> = 2" Round Lensed Downlight	<b>40</b> = 400lm / 6W	<b>27</b> = 2700K / 90 CRI	<b>BB</b> = Matte Black
	<b>60</b> = 600lm / 8W	<b>30</b> = 3000K / 90 CRI	<b>MPW</b> = Matte Powder White
	<b>85</b> = 850lm / 10W		

## Optional Mounting Accessories

Description
<b>NM2-2R-F</b> = New Construction Frame-In Plate
<b>NM2-EW-4</b> = 4' Quick Connect Extension Cable
<b>NM2-EW-10</b> = 10' Quick Connect Extension Cable

Example: **NM2-2RDCS6030MPW** = 2" M2 Round LED Recessed Lensed Downlight, 600lm / 8W, 3000K / 90 CRI, Matte Powder White

# NM2-2RDCS

## 2" M2 Round LED Recessed Lensed Downlight Accessories

Type \_\_\_\_\_  
Project \_\_\_\_\_  
Catalog No. \_\_\_\_\_  
Notes \_\_\_\_\_



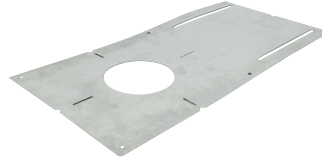
Reflector Insert for NM2-2RDCS

**NM2-2REFLB** Matte Black  
**NM2-2REFLHZ** Haze  
Replaces the reflector included with NM2-2RDCS lensed downlight



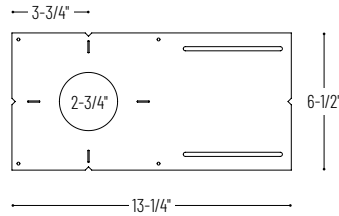
Baffle Insert for NM2-2RDCS

**NM2-2BAFB** Matte Black  
**NM2-2BAFMPW** Matte Powder White  
Replaces the reflector included with NM2-2RDCS lensed downlight



New Construction Frame-In Plate

**NM2-2R-F**  
For new construction pre-wiring and easier layout planning.



Quick Connect Extension Linkable Cables

**NM2-EW-4** 4' Cable  
**NM2-EW-10** 10' Cable  
Use to extend the length between luminaire and driver enclosure. Can be connected together to create custom lengths. Maximum length between luminaire and driver is 40'.

# PHOTOMETRICS

## 2" M2 Round LED Recessed Lensed Downlight

Type

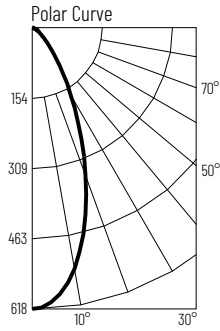
Project

Catalog No.

Notes

### Test Information

Test Number: NTR1506  
 Part Number: NM2-2RDSCS4030MPW  
 Beam Spread: 44° Flood  
 Lumens: 450lm  
 Wattage: 7.08W  
 Efficacy: 63lpw  
 CCT / CRI: 3000K / 90 CRI  
 Spacing Criteria (0°-180): 0.7  
 Spacing Criteria (90°-270): 0.7



### Illuminance at a Distance

Distance from Luminaire	FC at Nadir	Beam Diameter
2'	154fc	1'-7"
4'	38.6fc	3'-2"
6'	17.2fc	4'-10"
8'	9.7fc	6'-5"
10'	6.2fc	8'

### Zonal Lumen Summary

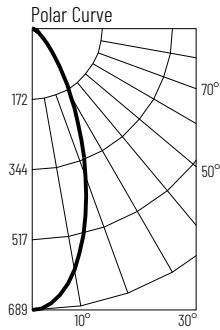
Zone	Lumens	% Luminaire
0-30	293	65.1
0-40	366	81.3
0-60	427	95
0-90	449	99.9
90-180	0	0.1
0-180	450	100

### Candela Table

Vertical Angles	Candela
0	618
5	596
15	446
25	249
35	114
45	50

### Test Information

Test Number: NTR1505  
 Part Number: NM2-2RDSCS6030MPW  
 Beam Spread: 44° Flood  
 Lumens: 505lm  
 Wattage: 8.1W  
 Efficacy: 62lpw  
 CCT / CRI: 3000K / 90 CRI  
 Spacing Criteria (0°-180): 0.7  
 Spacing Criteria (90°-270): 0.7



### Illuminance at a Distance

Distance from Luminaire	FC at Nadir	Beam Diameter
2'	172fc	1'-7"
4'	43.1fc	3'-2"
6'	19.1fc	4'-10"
8'	10.8fc	6'-5"
10'	6.9fc	8'

### Zonal Lumen Summary

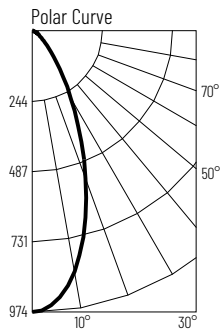
Zone	Lumens	% Luminaire
0-30	328	65
0-40	410	81.2
0-60	479	95
0-90	504	99.9
90-180	0	0.1
0-180	505	100

### Candela Table

Vertical Angles	Candela
0	689
5	666
15	501
25	280
35	129
45	57

### Test Information

Test Number: NTR1504  
 Part Number: NM2-2RDSCS8530MPW  
 Beam Spread: 44° Flood  
 Lumens: 725lm  
 Wattage: 10W  
 Efficacy: 72lpw  
 CCT / CRI: 3000K / 90 CRI  
 Spacing Criteria (0°-180): 0.7  
 Spacing Criteria (90°-270): 0.7



### Illuminance at a Distance

Distance from Luminaire	FC at Nadir	Beam Diameter
2'	244fc	1'-7"
4'	60.9fc	3'-2"
6'	27.1fc	4'-10"
8'	15.2fc	6'-5"
10'	9.7fc	8'-1"

### Zonal Lumen Summary

Zone	Lumens	% Luminaire
0-30	466	64.3
0-40	583	80.5
0-60	686	94.7
0-90	724	99.9
90-180	1	0.1
0-180	725	100

### Candela Table

Vertical Angles	Candela
0	974
5	945
15	710
25	396
35	184
45	84