

# NRLIN

## L-Line LED Recessed Linear

Source: 23W to 82W LED  
1050lm to 8400lm

Type \_\_\_\_\_

Project \_\_\_\_\_

Catalog No. \_\_\_\_\_

Notes \_\_\_\_\_

### PRODUCT DESCRIPTION

Recessed L-Line Series offers a clean and modern appearance with a recessed housing. Symmetrical light distribution will evenly illuminate surfaces with a diffused lens, making the L-Line ideal for commercial, retail, healthcare and education applications.

### FEATURES

- 2' to 8' linear luminaires
- 1050 lumens per foot
- 3000K, 3500K, 4000K
- 0-10V dimming
- 120-277V input
- Recessed into ceilings up to 1" thick

### SPECIFICATION

**Construction:** One piece extruded aluminum housing with solid end caps. Includes diffused polycarbonate lens for symmetrical light distribution.

**Mounting:** Luminaires include ceiling attachment brackets for mounting.  
Minimum ceiling thickness: 0.25" / Maximum ceiling thickness: 1"

### ELECTRICAL

**Input Voltage:** 120-277V

**Lumens / Wattage:**

**NRLIN-2** = 2100lm / 23W; **NRLIN-4** = 4200lm / 41W; **NRLIN-8** = 8400lm / 82W

**Color Temperature:** 3000K, 3500K, 4000K

**Color Rendering Index:** 80+ CRI

**Operating Temperature:** 0°C to 30°C

**Dimming:** 0-10V dimming down to 10%

**Maximum Run Length:** 80'

### OPTIONAL ACCESSORY

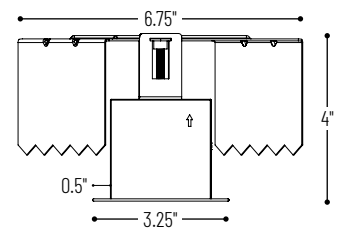
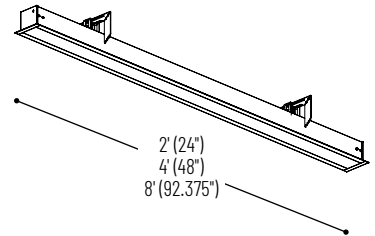
**NRLIN-BRKT:** Bracket for Daisy Chaining

### LABELS AND LISTINGS

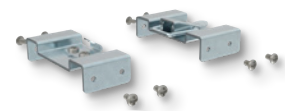
- cULus Listed for Damp Location
- 5-Year Limited Warranty



### PRODUCT IMAGES & DIMENSIONS



Side View



**NRLIN-BRKT**  
Brackets for Daisy Chaining

### L-Line LED Linear Recessed

Length	Lumens Per Foot	Color Temp.	Finish
<b>NRLIN-2</b> = 2' (actual: 24")	<b>10</b> = 1050lm/ft.	<b>30</b> = 3000K	<b>A</b> = Aluminum
<b>NRLIN-4</b> = 4' (actual: 48")		<b>35</b> = 3500K	<b>W</b> = White
<b>NRLIN-8</b> = 8' (actual: 92.375")		<b>40</b> = 4000K	

### Optional Accessory

Description
<b>NRLIN-BRKT</b> = Brackets for Daisy Chaining

Example: **NRLIN-21030A** = 2' L-Line LED Linear Recessed, 1050lm/ft., 3000K, Aluminum finish

# PHOTOMETRICS

## L-Line LED Linear Series

Type \_\_\_\_\_

Project \_\_\_\_\_

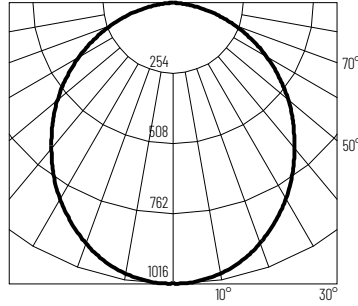
Catalog No. \_\_\_\_\_

Notes \_\_\_\_\_

### Test Information

Test Number: 12284668.01  
 Part Number: NRLIN-21030A  
 Lumens: 2637lm  
 Wattage: 22W  
 Efficacy: 120lpw  
 CCT / CRI: 3000K / 80 CRI  
 Spacing Criteria (0°-180°): 1.2  
 Spacing Criteria (90°-270°): 1.2

Polar Curve



Zonal Lumen Summary

Zone	Lumens	% Luminaire
0-30	763	28.9
0-40	1227	46.5
0-60	2105	79.8
0-90	2637	100
90-180	0	0
0-180	2637	100

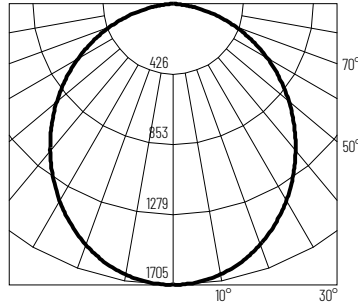
Candela Table

Vertical Angles	Candela
0	1010
5	997
15	949
25	860
35	742
45	607

### Test Information

Test Number: 12284668.04  
 Part Number: NRLIN-41030A  
 Lumens: 4453lm  
 Wattage: 38W  
 Efficacy: 118lpw  
 CCT / CRI: 3000K / 80 CRI  
 Spacing Criteria (0°-180°): 1.2  
 Spacing Criteria (90°-270°): 1.2

Polar Curve



Zonal Lumen Summary

Zone	Lumens	% Luminaire
0-30	1286	28.9
0-40	2073	46.5
0-60	3562	80
0-90	4453	100
90-180	0	0
0-180	4453	100

Candela Table

Vertical Angles	Candela
0	1700
5	1681
15	1605
25	1460
35	1263
45	1033