

# NUTP5 Series

## 24V Hy-Brite LED Tape Light

Source: 2.7W/ft. LED  
200lm/ft.

Type \_\_\_\_\_

Project \_\_\_\_\_

Catalog No. \_\_\_\_\_

Notes \_\_\_\_\_

### PRODUCT DESCRIPTION

Hy-Brite LED Tape is the perfect solution when you need more light than Standard LED Tape but less than high output LED Tape. Producing 200 lumens, the Hy-Brite uses the same connectors and accessories as the High Output LED Tape. The low profile tape is the ideal for coves, architectural details, under and in cabinets, toe kicks, and back lighting. IP44 rated, Hy-Brite can be used outdoors when not exposed to direct water spray. This tape is available in amber finish for dark surfaces and white finish for white or light surfaces.

### FEATURES

- Available in 16' roll, 12" section, and 4" section
- 24V DC system
- 200 lumens per foot
- Single color illumination in three color temperatures (2700K, 3000K or 4200K)
- Separable every 12", easily disconnected and connected without soldering
- Field cuttable every 4" or 6 LEDs
- Easy to install: pre-applied 3M™ tape or 15 acrylic mounting clips (included with roll)
- No soldering or additional wiring is required

### INCLUDED WITH EVERY 16' ROLL

(1) 16' Tape Light Roll with 12" separable sections, (15) Acrylic Mounting Clips with screws [NATHR-680], and (1) 12" Power Line Interconnector [NAHO-609].

### SPECIFICATION

**Construction:** The silicone encapsulated tape can be cut every 6 LEDs at marked intervals. Cutting does not effect circuit (shrink wrap tube included for concealment). LED Tape Light is also separable every 12", each connection has pre-installed shrink wrap around power connections to ensure listing. Simply slice the clear shrink wrap at each electrical connection, and separate pieces. This eliminates soldering when using partial rolls. Each roll or kit comes with 12" power line connector [NAHO-609].

**Mounting:** Each Tape Light includes pre-applied 3M™ adhesive tape for simple installation. Optional channels and clear acrylic clips are available.

### LIMITATIONS

- Not rated or warranted for enclosed applications
- Tape light and most accessories are not rated for in-wall installation (NATL-W16-2 is rated for in-wall installations)
- Do not install in where LED chips are exposed to direct sunlight, as damage to the phosphor will occur

### ELECTRICAL

**Input Voltage:** 24V

**Lumens / Wattage:** 200lm / 2.7W per foot

**Color Temperature:** 2700K, 3000K or 4200K

**CRI:** 80 or 90 CRI (must specify)

**Operating Temp.:** -25°C to 45°C

**Dimming:** Dimmable with Dimmable LED Driver

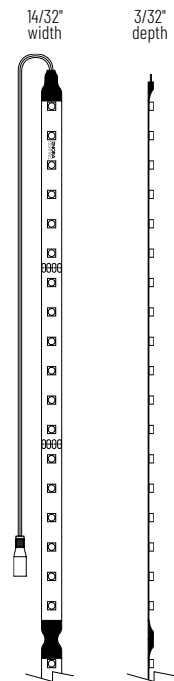
**Maximum Run Length:** 32'

### LABELS AND LISTINGS

- cULus Listed for Damp Location
- IP44 rated
- 3-Year Limited Warranty



### PRODUCT IMAGES & DIMENSIONS



## 24V Hy-Brite LED Tape Light

Length / Finish	CCT / CRI	Section Length
<b>NUTP5-16LED</b> = 16' Roll / Amber finish	<b>27</b> = 2700K / 80 CRI	<b>(blank)</b> = 16' Roll
<b>NUTP5-W16LED</b> = 16' Roll / White finish	<b>30</b> = 3000K / 80 CRI	<b>/4</b> = 4' Section
<b>NUTP5-LED</b> = Section / Amber finish	<b>42</b> = 4200K / 80 CRI	<b>/12</b> = 12" Section
<b>NUTP5-WLED</b> = Section / White finish	<b>927</b> = 2700K / 90 CRI	
	<b>930</b> = 3000K / 90 CRI	
	<b>942</b> = 4200K / 90 CRI	

Example: **NUTP5-WLED930/12** = 12" 24V Hy-Brite LED Tape Light, 3000K / 90 CRI

# NUTP5 Series

## 24V Hy-Brite LED Tape Light Accessories

Type

Project

Catalog No.

Notes



"Y" Splitter Cable

**NAHO-600W**

Allows splitting the Tape Light from a run or driver, into two separate runs.



X-Splitter Cable

**NAHO-601W**

Allows splitting the Tape Light from a run or driver, into three separate runs.



Interconnection Cable

**NAHO-602W** 2" Cable  
**NAHO-606W** 6" Cable  
**NAHO-618W** 18" Cable  
**NAHO-636W** 36" Cable  
**NAHO-672W** 72" Cable

Allows easy linking of two Tape Light sections. Cables are flexible and can be moved in any direction, or be joined together for custom lengths.



Power Line Interconnector

**NAHO-609W** 12" Cable

Connects any Tape Light run to a driver. (1) Power line interconnector is included with every Tape Light roll.



Power Line Interconnector with On/Off Switch

**NAHO-611W**

Allows individual switching on any Tape Light run, and connect LED Tape Light run directly to LED Driver.



Shrink Wrap Tube

**NATL-400** Pack of 5

Seals connection made in the field. Necessary to maintain cULus listing. Two shrink wrap tubes are included with every Tape Light roll and section.



End Cap

**NATL-403** Black  
**NATL-403W** White

Covers open end of Tape Light.



Clear Acrylic Mounting Clips

**NATHR-685** Pack of 15

Use in conjunction with adhesive backing to attach Tape Light to a surface. Pack of 15 clear acrylic mounting clips are included with every Tape Light roll.



2" Wire Raceway

**NATL-422B** Black  
**NATL-422W** White

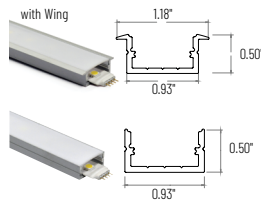
Field-cuttable plastic. Includes wire channel with double faced tape and cover.



4" Channel

**NATHR-680** Aluminum

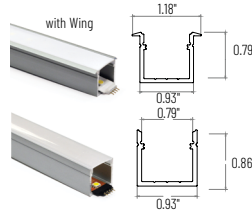
Mounts Tape Light to various surfaces. Field cuttable.



4" Shallow Channels

**NATL-C23A** Aluminum w/Wing  
**NATL-C24A** Aluminum  
**NATL-C24B** Black  
**NATL-C24W** White

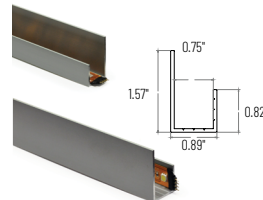
Used to mount tape light to various surfaces. Plastic diffuser and end caps included. Field cuttable.



4" Deep Channels

**NATL-C25A** Aluminum w/Wing  
**NATL-C26A** Aluminum  
**NATL-C26B** Black  
**NATL-C26W** White

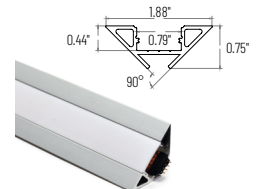
Used to mount tape light to various surfaces. Plastic diffuser and end caps included. Field cuttable.



4" J-Style Channels

**NATL-C27A** Aluminum

Used to mount tape light to various surfaces. Field cuttable.



4" Corner Channels

**NATL-C28A** Aluminum  
**NATL-C28B** Black  
**NATL-C28W** White

Plastic diffuser and End caps included. Field cuttable

# NUTP5 Series

## 24V Hy-Brite LED Tape Light Drivers & Accessories

Type

Project

Catalog No.

Notes



Direct Plug-In LED Driver

**NATL-524W** 24V 24W  
**NATL-545W** 24V 45W

**Input Voltage:** 120V  
**Cable Length:** 6'



Direct Plug-In LED Driver

**NATL-596W** 24V 96W

**Input Voltage:** 120V  
**Input Wire:** 5' Cord and Plug  
**Output Wire:** 44" Power line connector



Class II Hardwire LED Driver

**NATL-5030HW** 24V 30W  
**NATL-5060HW** 24V 60W  
**NATL-5100HW** 24V 100W

**Input Voltage:** 120-240V  
**Dimming:** Non-Dimmable  
**Includes:** 10' Power Line Connector



Class II Hardwire LED Driver  
0-10V Dimming

**NATL-5096-24-HWD10** 24V 96W

**Input Voltage:** 120-277V  
**Dimming:** 0-10V  
**Includes:** 10' Power Line Connector



Class II Hardwire LED Driver  
ELV Dimming

**NATLED-5040HW** 24V 40W

**NATLED-5075HW** 24V 75W

**Input Voltage:** 120V  
**Dimming:** ELV  
**Includes:** 10' Power Line Connector



Class II Hardwire LED Driver  
with Breakers, MLV Dimming

**NMT-303/24C2D1** 3 x 100W

**Input Voltage:** 120V  
**Dimming:** Magnetic Low Voltage  
**Breakers:** (3) 100W  
**Includes:** (3) 10' Power Line Connectors



Class II Hardwire LED Driver  
with Regulator, MLV Dimming

**NMTD-60/24D** 24V 60W

**NMTD-96/24D** 24V 96W

**Input Voltage:** 120-277V  
**Dimming:** Magnetic Low Voltage  
**Regulator:** Integral regulator for constant current and voltage  
**Includes:** 10' Power Line Connector



NEXUS® All-in-One LED Driver  
and Dimmer

**NATL-SWEX100/24A** 24V 100W

**NATL-SWEX/3FP** 3 Face Plates

**Input Voltage:** 120V  
**Dimming:** Integral Dimmer  
**Description:** Eliminates the driver and allows 120V input and 24V output from a single gang box. 100-5% dimming and on/off switch.



Power Line Connector

**NATL-10** 10' Power Line  
**NATL-30** 30' Power Line

For use with Class II drivers. Carries output from driver, requires power line interconnectors.

**NATL-302W** 5" Splitter

Splits power line connector into two separate leads, requires power line cable.



Touch Dimmer with Memory

**NATL-518W**

72W max., no power fail memory, touch on/off and hold to dim.



DC Plug & Play Motion Sensor

**NAL-856W**

12' Max activation distance; 20 second auto off; 120° detection zone; Max Load 4A.



Low Voltage Splice Box

**NATL-415W**

Use to join low voltage lead to power line connector.



Terminal/Splitter Block

**NATL-407** 4-Way  
2-3/8"L x 1-1/8"W x 7/8"D

**NATL-408** 8-Way  
4"L x 1-1/8"W x 7/8"D



16AWG In-Wall Rated Wire

**NATL-W16-2-250** 16AWG 250'  
**NATL-W16-2-20** 16AWG 20'

16 AWG low voltage Class II two-conductor, in-wall rated wire.



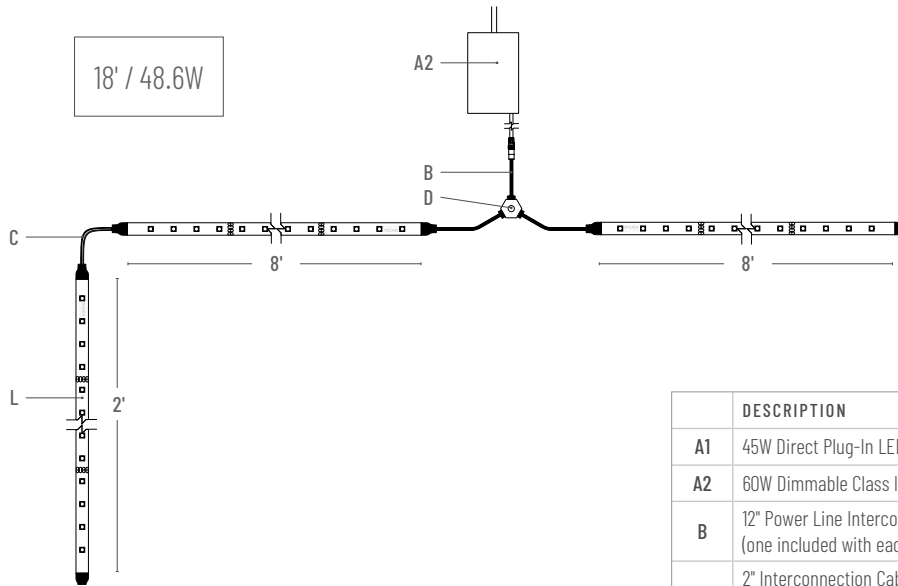
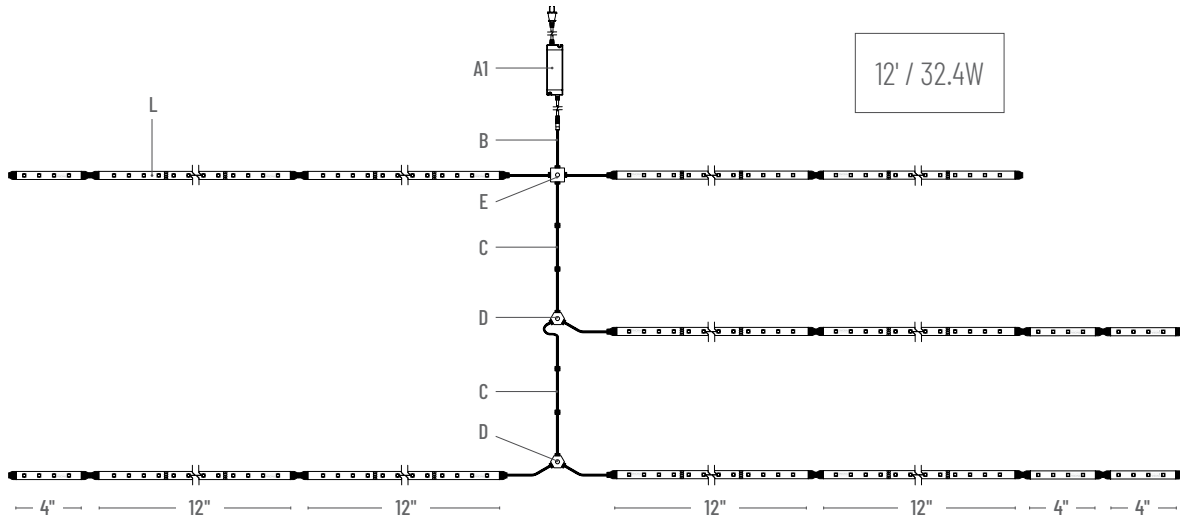
Wire Clip, Plastic - 10pk

**NATL-404W** J-Clip  
**NATL-405W** Over the Wire  
**NATL-406W** Square Clip

# NUTP5 Series

24V Hy-Brite LED Tape Light - Sample Layout

Type \_\_\_\_\_  
 Project \_\_\_\_\_  
 Catalog No. \_\_\_\_\_  
 Notes \_\_\_\_\_



	DESCRIPTION	ITEM #
A1	45W Direct Plug-In LED Driver	NATL-545W
A2	60W Dimmable Class II Power Supply	NMTD-60/24D
B	12" Power Line Interconnector (one included with each Tape Light roll)	NAHO-609W
C	2" Interconnection Cable	NAHO-602W
	6" Interconnection Cable	NAHO-606W
	18" Interconnection Cable	NAHO-618W
	36" Interconnection Cable	NAHO-636W
	72" Interconnection Cable	NAHO-672W
D	"Y" Splitter Cable	NAHO-600W
E	"X" Splitter Cable	NAHO-601W
L	4" Hy-Brite LED Tape Light	NUTP5-WLED(color)/4
	12" Hy-Brite LED Tape Light	NUTP5-WLED(color)/12
	16" Hy-Brite LED Tape Light Roll	NUTP5-W16LED(color)

\*Note: All drivers require power line interconnector to connect to tape.