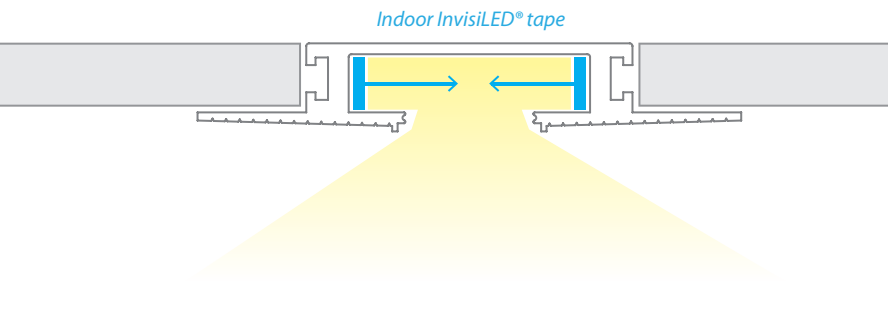


SYMMETRICAL RECESSED CHANNEL

LED-T

WAC LIGHTING

Responsible Lighting®



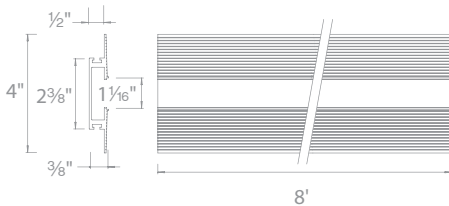
Fixture Type:

Catalog Number:

Project: _____

Location: _____

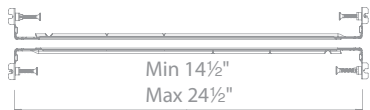
- Installs within drywall depth
- Linear channel can be field cut
- Accommodates either one or two runs of InvisiLED® indoor tape
- Includes a translucent white acrylic diffuser
- Dense foam insert for spackling
- Aluminum extrusion powder coated in matte white



8 ft linear channel

LED-T-RCH1-WT

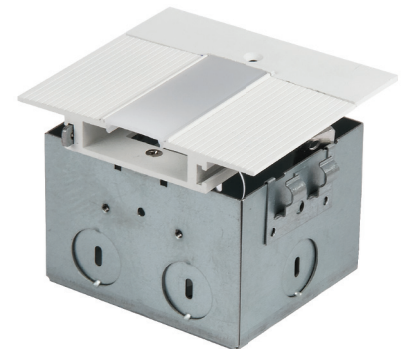
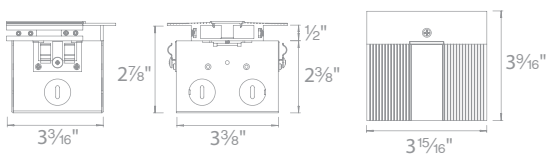
*Includes an end cap and diffuser
Can be field cut*



Power feed

LED-T-RBOX1-WT

*Includes a wiring box, two hanger bars,
two five-pin InvisiLED® adapters, an end cap and diffuser
The end cap may be placed on either side or be removed
Hanger bars may install on any side of the wiring box*



LED-T-____-WT

Example: **LED-T-WTW1-WT**

WAC Lighting
www.waclighting.com
Phone (800) 526.2588 • Fax (800) 526.2585

Headquarters/Eastern Distribution Center
44 Harbor Park Drive • Port Washington, NY 11050
Phone (516) 515.5000 • Fax (516) 515.5050

Western Distribution Center
1750 Archibald Avenue • Ontario, CA 91760
Phone (800) 526.2588 • Fax (800) 526.2585

SYMMETRICAL RECESSED CHANNEL

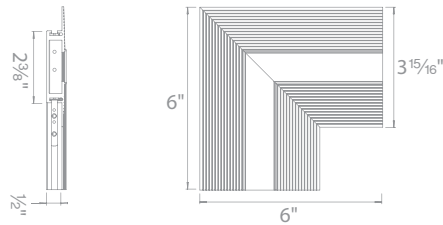
WAC LIGHTING

LED-T

Responsible Lighting®

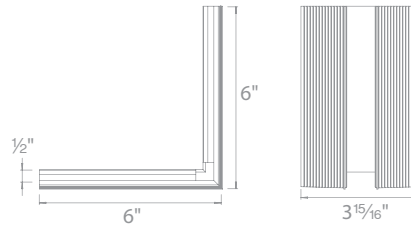
Lateral corner
Includes diffuser

LED-T-CTC1-WT



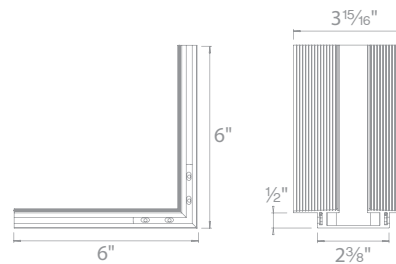
Perpendicular corner
Transitions between walls or wall to ceiling
Includes diffuser

LED-T-WTC1-WT



Outside corner
Transitions around columns, bump outs, or soffits
Includes diffuser

LED-T-WTW1-WT



LED-T-_____-WT

Example: **LED-T-WTW1-WT**

PERFORMANCE CHART

	InvisiLED® Pro3	InvisiLED® Pro2	InvisiLED® Pro	InvisiLED® LITE
2200K	120			
2700K	215	180	110	85
3000K	220	165	110	100
3500K	245	185	115	
4500K	265	185	120	

Two strips of tapes were used under the diffuser, data shows lumen output per foot

WAC Lighting
www.waclighting.com
Phone (800) 526.2588 • Fax (800) 526.2585

Headquarters/Eastern Distribution Center
44 Harbor Park Drive • Port Washington, NY 11050
Phone (516) 515.5000 • Fax (516) 515.5050

Western Distribution Center
1750 Archibald Avenue • Ontario, CA 91760
Phone (800) 526.2588 • Fax (800) 526.2585