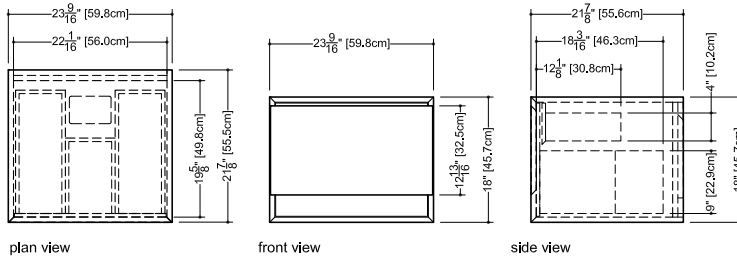


M Collection
 Wall-mount vanity
 18" height



Wall-mount vanity M 2418 WM – 1 drawer – 24" length
 21 7/8" depth x 23 9/16" length x 18" height – 557 x 598 x 457 mm



finishes and colors

oak

- natural
- wenge
- white
- black
- stone harbour grey
- coffee bean
- smoked

walnut

- natural
- natural no calico
- chocolate

premium wood

- torrifed eucalyptus
- mozambique

matte lacquer*

- white
- stone harbour grey
- black

high gloss lacquer**

- white

- 45 degree bevel cuts precluding the need for drawer hardware
- All natural wood veneer
- AWI rated level 5 marine grade finish for moisture resistance and durability (industry's highest finishing class)
- Finished vanity interiors in addition to front and sides
- Solid maple dovetailed drawers
- Drawer within a drawer
- Slow closing ball bearing glides
- Vanity top comes fully finished. Can be pre-cut at factory, upon request, if ordered with a vcs/vovs sink.
- **Special wall preparation recommendations:** the distance between studs should not exceed 16". Each stud should be reinforced vertically by 2"x 3" wooden studs and horizontally with 2"x 6" wooden studs at a height of 30" all along the width of the vanity.

*ATTENTION: Vessel sink not recommended with this finish

**ATTENTION: High-Gloss finish on sides and drawer facade only. Bottom and interior in white mat. This finish should only be ordered with an integrated countertop (vessel sink not recommended)

Drawers configuration



Horseshoe

WETSTYLE cannot be held responsible for any technical errors and reserves the right to make revisions without notice.

Approximate measurement.
 The manufacturer accepts 1/4" (6.35mm) variance.

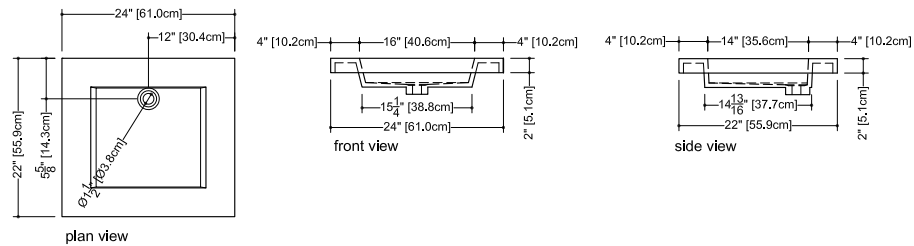
www.WETSTYLE.COM - Montreal - Canada
 Tel. 1 888.536.9001 - service@wetstyle.com



Compatible Integrated Countertop for M 2418 WM vanity (countertop sold separately)

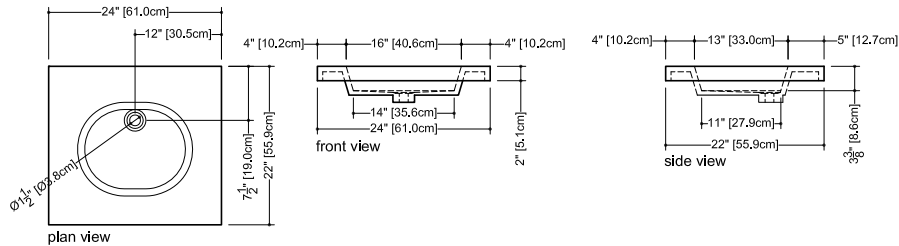
Cube Collection Lavatories_22" depth x 24" length x 2" height - 559 x 610 x 51 mm

VCS 24



Ove Collection Integrated Countertop_22" depth x 24" length x 2" height - 559 x 610 x 51 mm

VOVS 24



Also compatible with the following WETSTYLE vessel sink models:

VBE821A, VC815A, VC821A, VOV815A, VOV821A, VCR821A, VTP821A

WETSTYLE cannot be held responsible for any technical errors and reserves the right to make revisions without notice.

Approximate measurement.
The manufacturer accepts $\frac{1}{4}$ " (6.35mm) variance.

www.WETSTYLE.COM - Montreal - Canada
Tel. 1 888.536.9001 - service@wetstyle.com



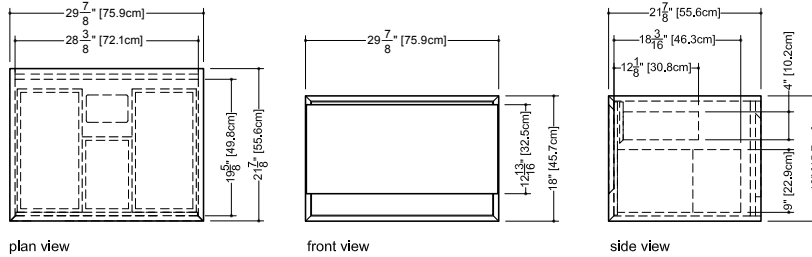
M Collection
Wall-mount vanity
18" height



Furniture

Wall-mount vanity M 3018 WM – 1 drawer – 30" length

21 7/8" depth x 28 7/8" length x 18" height – 557 x 759 x 457 mm



finishes and colors

oak

natural
wenge
white
black
stone harbour grey
coffee bean
smoked

walnut

natural
natural no calico
chocolate

premium wood

torrified eucalyptus
mozambique

matte lacquer*

white
stone harbour grey
black

high gloss lacquer**

white

- 45 degree bevel cuts precluding the need for drawer hardware
- All natural wood veneer
- AWI rated level 5 marine grade finish for moisture resistance and durability (industry's highest finishing class)
- Finished vanity interiors in addition to front and sides
- Solid maple dovetailed drawers
- Drawer within a drawer
- Slow closing ball bearing glides
- Vanity top comes fully finished. Can be pre-cut at factory, upon request, if ordered with a vcs/vovs sink.
- **Special wall preparation recommendations:**
the distance between studs should not exceed 16". Each stud should be reinforced vertically by 2"x 3" wooden studs and horizontally with 2"x 6" wooden studs at a height of 30" all along the width of the vanity.

Drawers configuration



Horseshoe

*ATTENTION: Vessel sink not recommended with this finish

**ATTENTION: High-Gloss finish on sides and drawer facade only. Bottom and interior in white mat. This finish should only be ordered with an integrated countertop (vessel sink not recommended)

WETSTYLE cannot be held responsible for any technical errors and reserves the right to make revisions without notice.

Approximate measurement.
The manufacturer accepts 1/4" (6.35mm) variance.

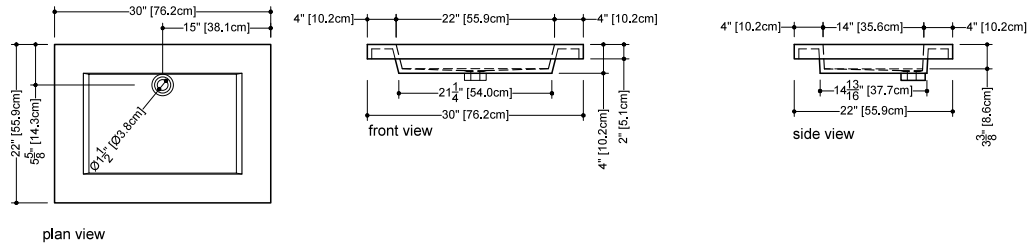
www.WETSTYLE.COM - Montreal - Canada
Tel. 1 888.536.9001 - service@wetstyle.com



Compatible Integrated Countertop for M 3018 WM vanity (countertop sold separately)

Cube Collection Lavatories_22" depth x 30" length x 2" height - 559 x 762 x 51 mm

VCS 30



Also compatible with the following WETSTYLE vessel sink models:

VTP821A, VCR815A, VBE821A, VC815A, VC821A, VOV815A, VOV821A

WETSTYLE cannot be held responsible for any technical errors and reserves the right to make revisions without notice.

Approximate measurement.
The manufacturer accepts 1/4" (6.35mm) variance.

www.WETSTYLE.COM - Montreal - Canada
Tel. 1 888.536.9001 - service@wetstyle.com



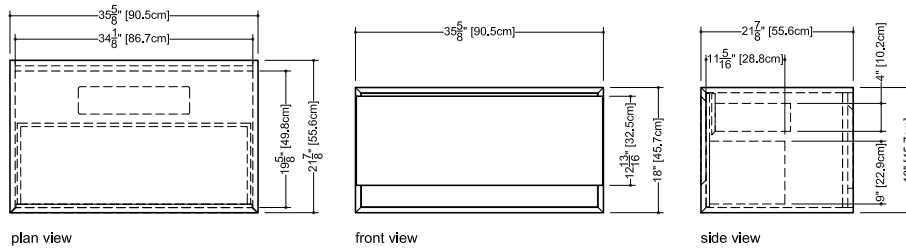
M Collection
 Wall-mount vanity
 18" height



Furniture

Wall-mount vanity M 3618 WM – 1 drawer – 36" length

21 7/8" depth x 35 5/8" length x 18" height – 557 x 905 x 457 mm



finishes and colors

oak

- natural
- wenge
- white
- black
- stone harbour grey
- coffee bean
- smoked

walnut

- natural
- natural no calico
- chocolate

premium wood

- torrifed eucalyptus
- mozambique

matte lacquer*

- white
- stone harbour grey
- black

high gloss lacquer**

- white

- 45 degree bevel cuts precluding the need for drawer hardware
- All natural wood veneer
- AWI rated level 5 marine grade finish for moisture resistance and durability (industry's highest finishing class)
- Finished vanity interiors in addition to front and sides
- Solid maple dovetailed drawers
- Drawer divider
- Drawer within a drawer
- Slow closing ball bearing glides
- Vanity top comes fully finished. Can be pre-cut at factory, upon request, if ordered with a vcs/vovs sink.
- **Special wall preparation recommendations:**
 the distance between studs should not exceed 16". Each stud should be reinforced vertically by 2" x 3" wooden studs and horizontally with 2" x 6" wooden studs at a height of 30" all along the width of the vanity.

*ATTENTION: Vessel sink not recommended with this finish

**ATTENTION: High-Gloss finish on sides and drawer facade only. Bottom and interior in white mat. This finish should only be ordered with an integrated countertop (vessel sink not recommended)

Drawers configuration



WETSTYLE cannot be held responsible for any technical errors and reserves the right to make revisions without notice.

Approximate measurement.
 The manufacturer accepts 1/4" (6.35mm) variance.

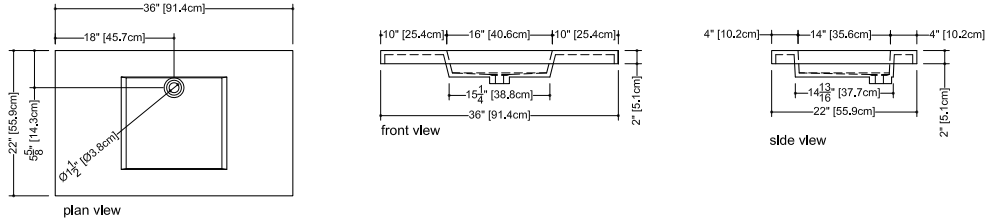
www.WETSTYLE.COM - Montreal - Canada
 Tel. 1 888.536.9001 - service@wetstyle.com



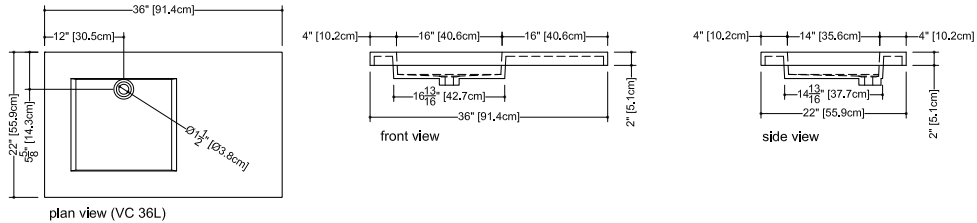
Compatible Integrated Countertop for M 3618 WM vanity (countertop sold separately)

Cube Collection Lavatories_22" depth x 36" length x 2" height - 559 x 914 x 51 mm

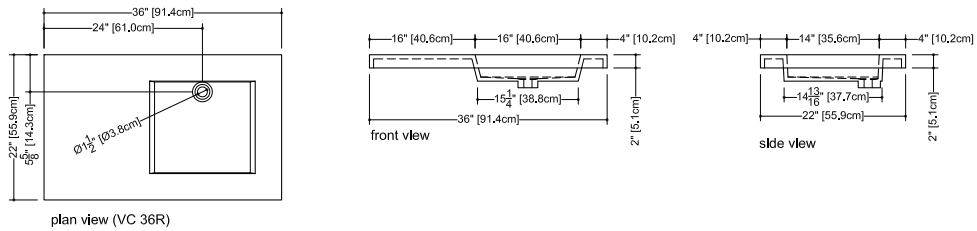
VCS 36C



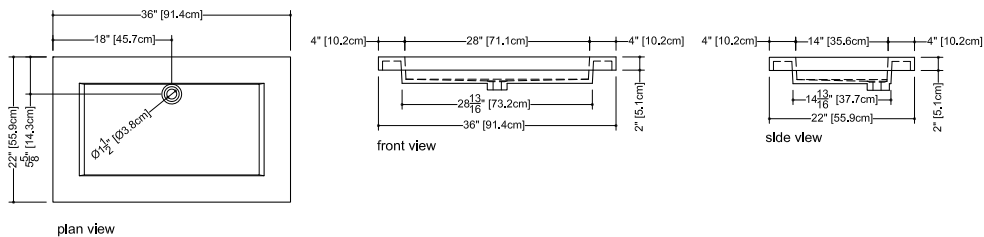
VCS 36L



VCS 36R

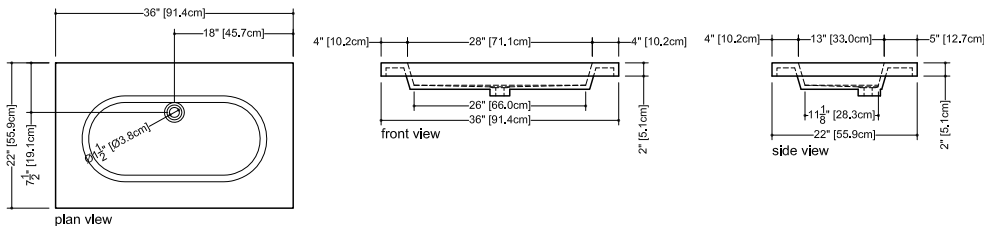


VCS 36



Ove Collection Lavatories_22" depth x 36" length x 2" height - 559 x 914 x 51 mm

VOVS 36



Also compatible with the following WETSTYLE vessel sink models:

VBE821A, VC815A, VC821A, VOV815A, VOV821A, VCR821A, VTP821A

WETSTYLE cannot be held responsible for any technical errors and reserves the right to make revisions without notice.

Approximate measurement.
The manufacturer accepts 1/4" (6.35mm) variance.

www.WETSTYLE.COM - Montreal - Canada
Tel. 1 888.536.9001 - service@wetstyle.com



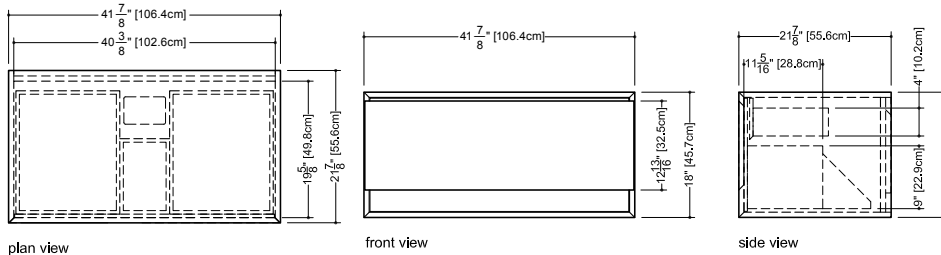
M Collection
Wall-mount vanity
18" height



Furniture

Wall-mount vanity M 4218 WM – 1 drawer – 42" length

21 7/8" depth x 41 7/8" length x 18" height – 557 x 1064 x 457 mm



finishes and colors

oak

natural
wenge
white
black
stone harbour grey
coffee bean
smoked

walnut

natural
natural no calico
chocolate

premium wood

torrified eucalyptus
mozambique

matte lacquer*

white
stone harbour grey
black

high gloss lacquer**

white

- 45 degree bevel cuts precluding the need for drawer hardware
- All natural wood veneer
- AWI rated level 5 marine grade finish for moisture resistance and durability (industry's highest finishing class)
- Finished vanity interiors in addition to front and sides
- Solid maple dovetailed drawer
- Drawer within a drawer
- Slow closing ball bearing glides
- Vanity top comes fully finished. Can be pre-cut at factory, upon request, if ordered with a vcs/vovs sink.
- Special wall preparation recommendations:** the distance between studs should not exceed 16". Each stud should be reinforced vertically by 2"x 3" wooden studs and horizontally with 2"x 6" wooden studs at a height of 30" all along the width of the vanity.

*ATTENTION: Vessel sink not recommended with this finish

**ATTENTION: High-Gloss finish on sides and drawer facade only. Bottom and interior in white mat. This finish should only be ordered with an integrated countertop (vessel sink not recommended)

Drawers configuration



WETSTYLE cannot be held responsible for any technical errors and reserves the right to make revisions without notice.

Approximate measurement.
The manufacturer accepts 1/4" (6.35mm) variance.

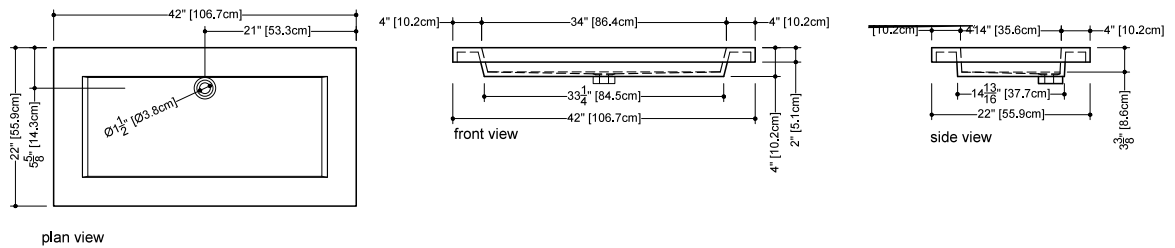
www.WETSTYLE.COM - Montreal - Canada
Tel. 1 888.536.9001 - service@wetstyle.com



Compatible Integrated Countertop for M 4218 WM vanity (countertop sold separately)

Cube Collection Lavatories_22" depth x 42" length x 2" height - 559 x 1069 x 51 mm

VCS 42



Also compatible with the following WETSTYLE vessel sink models:

VTP821A, VCR821A, VBE821A, VC815A, VC821A, VC836A, VOV815A, VOV821A

WETSTYLE cannot be held responsible for any technical errors and reserves the right to make revisions without notice.

Approximate measurement.
The manufacturer accepts 1/4" (6.35mm) variance.

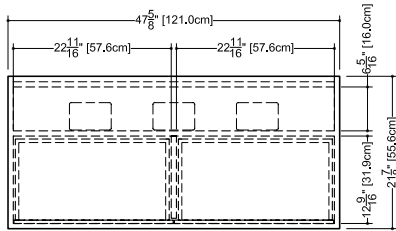
www.WETSTYLE.COM - Montreal - Canada
Tel. 1 888.536.9001 - service@wetstyle.com



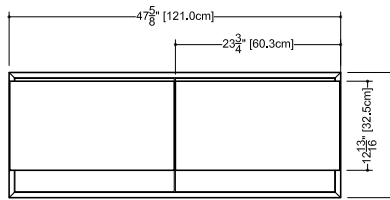
M Collection
Wall-mount vanity
18" height



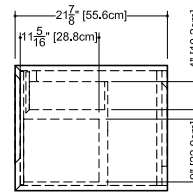
Wall-mount vanity M 4818 WM – 2 drawers – 48" length
21 7/8" depth x 47 5/8" length x 18" height – 557 x 1210 x 457 mm



plan view



front view



side view

finishes and colors

oak

natural
wenge
white
black
stone harbour grey
coffee bean
smoked

walnut

natural
natural no calico
chocolate

premium wood

torrified eucalyptus
mozambique

matte lacquer*

white
stone harbour grey
black

high gloss lacquer**

white

- 45 degree bevel cuts precluding the need for drawer hardware
- All natural wood veneer
- AWI rated level 5 marine grade finish for moisture resistance and durability (industry's highest finishing class)
- Finished vanity interiors in addition to front and sides
- Solid maple dovetailed drawer
- Drawer divider
- Drawer within a drawer
- Slow closing ball bearing glides
- Vanity top comes fully finished. Can be pre-cut at factory, upon request, if ordered with a vcs/vovs sink.
- **Special wall preparation recommendations:**
the distance between studs should not exceed 16". Each stud should be reinforced vertically by 2" x 3" wooden studs and horizontally with 2" x 6" wooden studs at a height of 30" all along the width of the vanity.

*ATTENTION: Vessel sink not recommended with this finish

**ATTENTION: High-Gloss finish on sides and drawer facade only. Bottom and interior in white mat. This finish should only be ordered with an integrated countertop (vessel sink not recommended)

Drawers configuration



WETSTYLE cannot be held responsible for any technical errors and reserves the right to make revisions without notice.

Approximate measurement.
The manufacturer accepts 1/4" (6.35mm) variance.

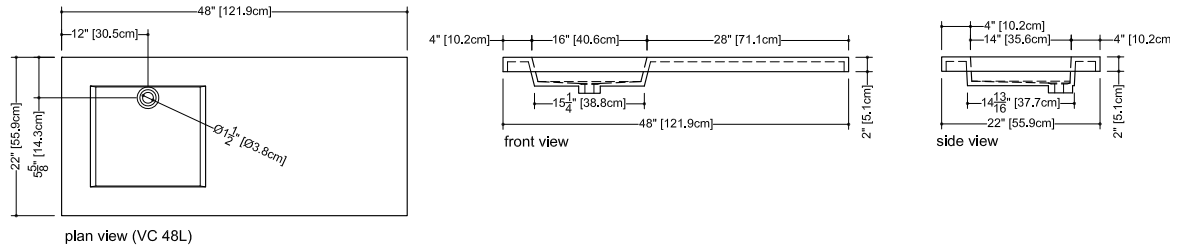
www.WETSTYLE.COM - Montreal - Canada
Tel. 1 888.536.9001 - service@wetstyle.com



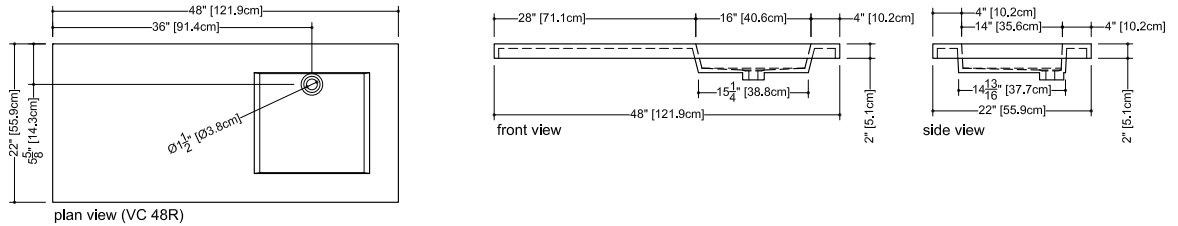
Compatible Integrated Countertop for M 4818 WM vanity (countertop sold separately)

Cube Collection Integrated Lavatories_22" depth x 48" length x 2" height - 559 x 1219 x 51 mm

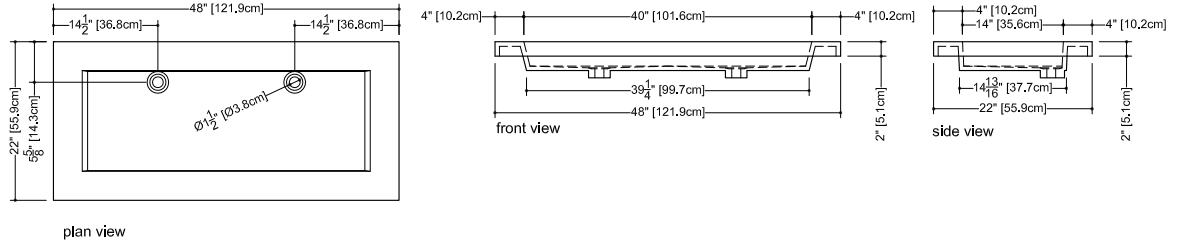
VCS 48L



VCS 48R



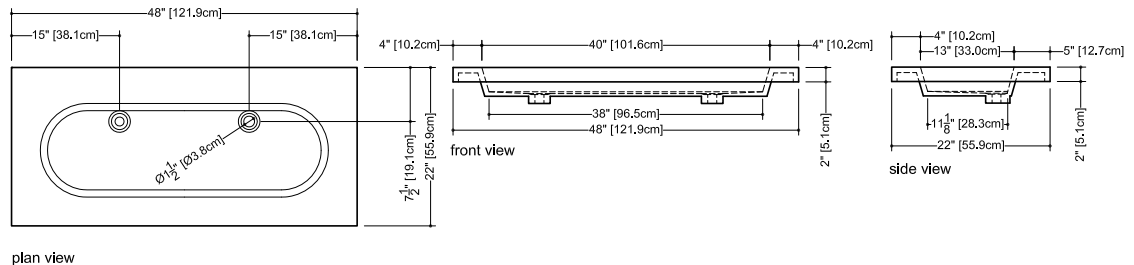
VCS 48



Compatible Integrated Countertop for M 4818 WM vanity (countertop sold separately)

Ove Collection Lavatories_22" depth x 48" length x 2" height - 559 x 1219 x 51 mm

VOVS 48



Also compatible with the following WETSTYLE vessel sink models:

VBE821A, VBE836A, VC815A, VC821A, VC836A, VOV815A, VOV821A, VOV836A, VCR821A, VTP821A

WETSTYLE cannot be held responsible for any technical errors and reserves the right to make revisions without notice.

Approximate measurement. The manufacturer accepts 1/4" (6.35mm) variance.

www.WETSTYLE.COM - Montreal - Canada
Tel. 1 888.536.9001 - service@wetstyle.com



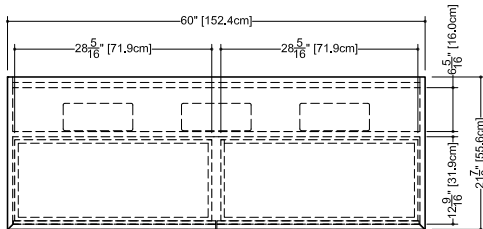
M Collection
Wall-mount vanity
18" height



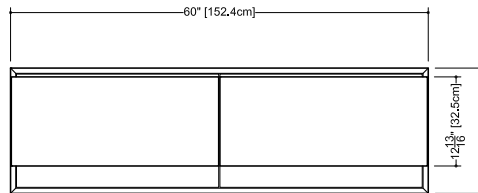
Furniture

Wall-mount vanity M 6018 WM – 2 drawers – 60" length

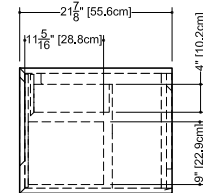
21 7/8" depth x 60" length x 18" height – 557 x 1524 x 457 mm



plan view



front view



side view

finishes and colors

oak

natural
wenge
white
black
stone harbour grey
coffee bean
smoked

walnut

natural
natural no calico
chocolate

premium wood

torrified eucalyptus
mozambique

matte lacquer*

white
stone harbour grey
black

high gloss lacquer**

white

- 45 degree bevel cuts precluding the need for drawer hardware
- All natural wood veneer
- AWI rated level 5 marine grade finish for moisture resistance and durability (industry's highest finishing class)
- Finished vanity interiors in addition to front and sides
- Solid maple dovetailed drawers
- Drawer divider
- Drawer within a drawer
- Slow closing ball bearing glides
- Vanity top comes fully finished. Can be pre-cut at factory, upon request, if ordered with a vcs/vovs sink.
- **Special wall preparation recommendations:**
the distance between studs should not exceed 16". Each stud should be reinforced vertically by 2" x 3" wooden studs and horizontally with 2" x 6" wooden studs at a height of 30" all along the width of the vanity.

*ATTENTION: Vessel sink not recommended with this finish

**ATTENTION: High-Gloss finish on sides and drawer facade only. Bottom and interior in white mat. This finish should only be ordered with an integrated countertop (vessel sink not recommended)

Drawers configuration



WETSTYLE cannot be held responsible for any technical errors and reserves the right to make revisions without notice.

Approximate measurement.
The manufacturer accepts 1/4" (6.35mm) variance.

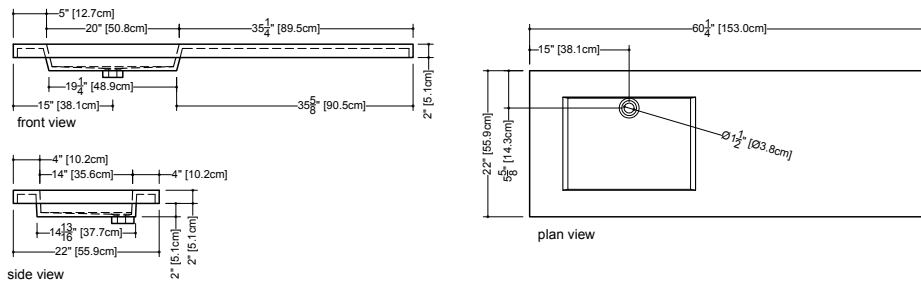
www.WETSTYLE.COM - Montreal - Canada
Tel. 1 888.536.9001 - service@wetstyle.com



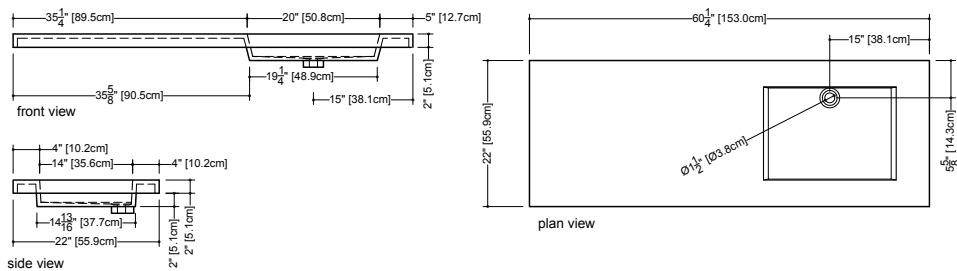
Compatible Integrated Countertop for M 6018 WM vanity (countertop sold separately)

Cube Collection Lavatories_22" depth x 60 1/4" length x 2" height - 559 x 1530 x 51 mm

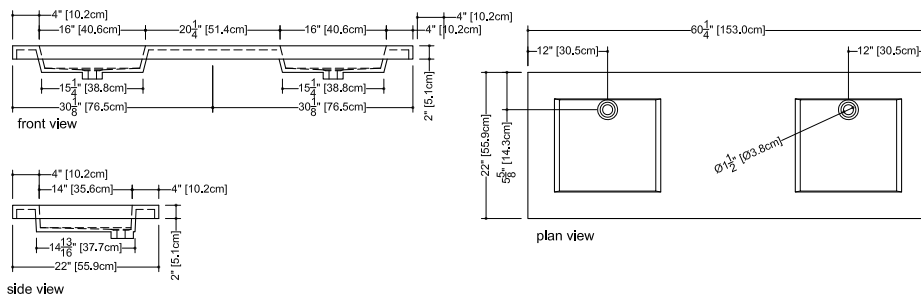
VCS 60L



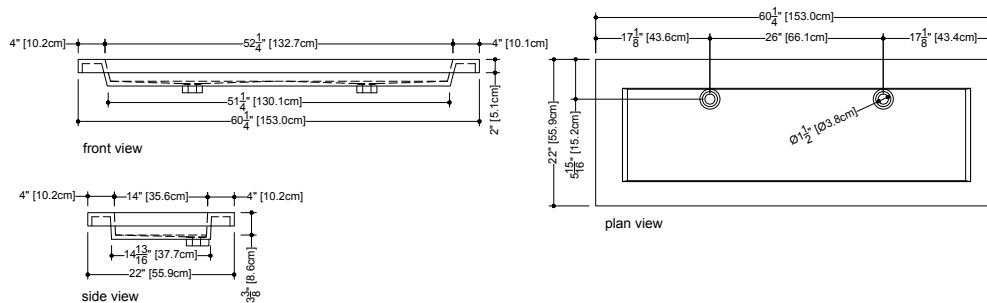
VCS 60R



VCS 60



VCS 60T



Also compatible with the following WETSTYLE vessel sink models:

VBE821A, VBE836A, VC815A, VC821A, VC836A, VC848A, VOV815A, VOV821A, VOV836A, VOV848A, VCR821A, VTP821A

WETSTYLE cannot be held responsible for any technical errors and reserves the right to make revisions without notice.

Approximate measurement. The manufacturer accepts 1/4" (6.35mm) variance.

www.WETSTYLE.COM - Montreal - Canada
Tel. 1 888.536.9001 - service@wetstyle.com



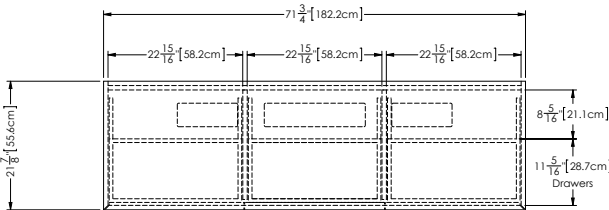
M Collection
Wall-mount vanity
18" height



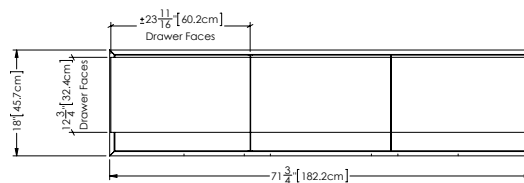
Furniture

Wall-mount vanity M 7218 WM – 3 drawers – 72" length

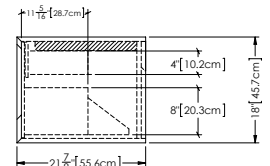
21 7/8" depth x 72" length x 18" height – 557 x 1829 x 457 mm



plan view



front view



side view

finishes and colors

oak

natural
wenge
white
black
stone harbour grey
coffee bean
smoked

walnut

natural
natural no calico
chocolate

premium wood

torrifed eucalyptus
mozambique

matte lacquer*

white
stone harbour grey
black

high gloss lacquer**

white

- 45 degree bevel cuts precluding the need for drawer hardware
- All natural wood veneer
- AWI rated level 5 marine grade finish for moisture resistance and durability (industry's highest finishing class)
- Finished vanity interiors in addition to front and sides
- Solid maple dovetailed drawers
- Drawer divider
- Drawer within a drawer
- Slow closing ball bearing glides
- Vanity top comes fully finished. Can be pre-cut at factory, upon request, if ordered with a vcs/vovs sink.
- Special wall preparation recommendations:**
the distance between studs should not exceed 16". Each stud should be reinforced vertically by 2" x 3" wooden studs and horizontally with 2" x 6" wooden studs at a height of 30" all along the width of the vanity.

*ATTENTION: Vessel sink not recommended with this finish

**ATTENTION: High-Gloss finish on sides and drawer facade only. Bottom and interior in white mat. This finish should only be ordered with an integrated countertop (vessel sink not recommended)

Drawers configuration



WETSTYLE cannot be held responsible for any technical errors and reserves the right to make revisions without notice.

Approximate measurement.
The manufacturer accepts 1/4" (6.35mm) variance.

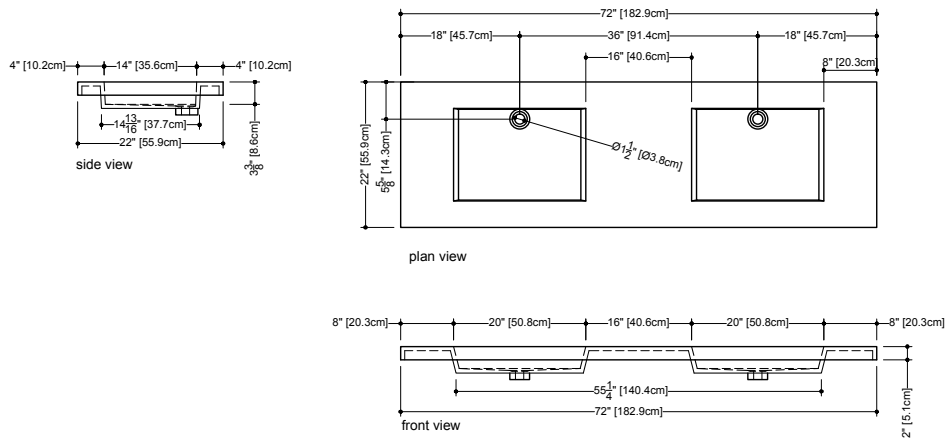
www.WETSTYLE.COM - Montreal - Canada
Tel. 1 888.536.9001 - service@wetstyle.com



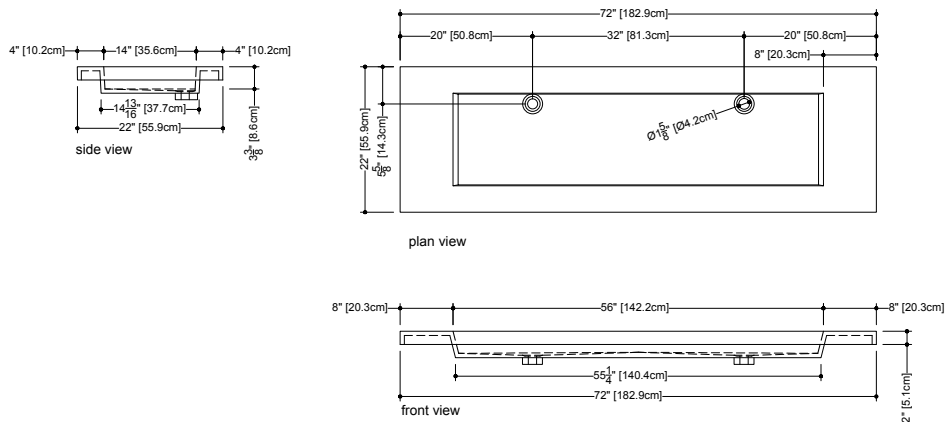
Compatible Integrated Countertop for M 7218 WM vanity (countertop sold separately)

Cube Collection Lavatories_22" depth x 72" length x 2" height - 559 x 1829 x 51 mm

VCS 72



VCS 72T



Also compatible with the following WETSTYLE vessel sink models:

VBE821A, VBE836A, VC815A, VC821A, VC836A, VC848A, VOV815A, VOV821A, VOV836A, VOV848A, VCR821A, VTP821A

WETSTYLE cannot be held responsible for any technical errors and reserves the right to make revisions without notice.

Approximate measurement.
The manufacturer accepts 1/4" (6.35mm) variance.

www.WETSTYLE.COM - Montreal - Canada
Tel. 1 888.536.9001 - service@wetstyle.com

